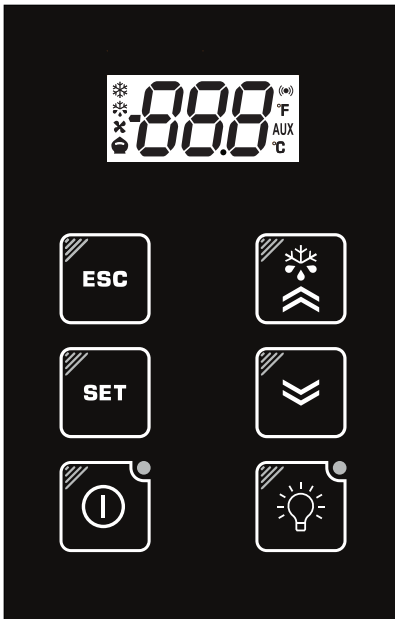


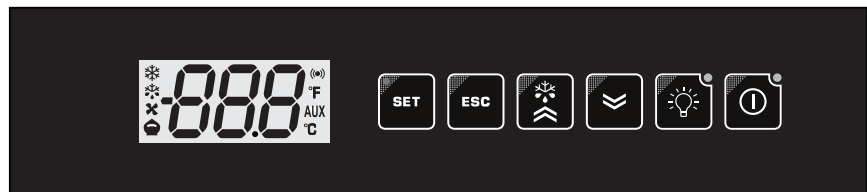
Keypads for full display and programming of controllers for ducted and plug-in refrigerated cabinets. The keypads are compatible with the controllers of RTX/RTD/RTN and IWP750/760 SMPS series.

USER INTERFACE

KDT vertical



KDT horizontal



NOTE: When switched on, the device performs a Lamp Test; the display and icons will flash for a few seconds to check that they all function correctly.

	Reduced Set / Economy icon Permanently on: Energy Saving active Blinking: reduced setpoint active Rapid blinking: access to level2 parameters Off: otherwise		Evaporator Fans icon Permanently on: evaporator fans on Off: otherwise
	Compressor icon Permanently on: compressor on Blinking: delay, protection or start blocked Off: otherwise		Defrost icon Permanently on: defrost Active Blinking: activated manually or from Digital Input (DI) Off: otherwise
	Alarms icon Permanently on: alarm present Blinking: alarm acknowledged Off: otherwise	AUX	AUX icon Permanently on: AUX output active Blinking: Deep Cooling cycle active Off: AUX output not active
°C	°C icon Permanently on: °C setting (dro=0) Off: otherwise	°F	°F icon Permanently on: °F setting (dro=1) Off: otherwise

KEYS

ESC Short press • Returns to the previous menu level • Confirms parameter value Long press (>5 seconds) • Activates the Reduced Set function (see H3x parameter of the power board)	SET (ENTER) Short press • Displays any alarms (if active) • Opens Machine Status menu Long press (>5 seconds) • Opens Programming menu • Confirms commands	STAND-BY (ON/OFF) Long press (>5 seconds) • Activates the Stand-by function (ON/OFF) (when outside the menus) (see H3x parameter of the power board) * If LED1 is lit, indicates 'Device off'
UP Short press • Scrolls through menu items • Increases values Long press (>5 seconds) • Activates the Manual Defrost function (see H3x parameter of the power board)	DOWN Short press • Scrolls through menu items • Decreases values Long press (>5 seconds) • User configurable function (see H3x parameter of the power board)	LIGHT Short press • Switches ON/OFF the light Long press (>5 seconds) • User configurable function (see H3x parameter of the power board) **If LED2 is lit, indicates 'Light relay activation'
+ ESC • IWP750/760 SMPS: Press and hold simultaneously for at least 2 seconds to lock the modification of control setpoint. To unlock it, repeat the aforementioned procedure. • RTX-RTD-RTN: Enables the remote control of the display (keypad shared on LINK ²).		

KEYPAD LOCK

At power-on or if no key is pressed for at least 30 seconds, the keypad enters 'keypad lock' mode.

To exit from 'keypad lock', press any key for at least 3 seconds.

The exit from this mode, is confirmed by the buzzer and the backlighting LEDs for the button you have pressed (**KDT vertical** only).

The action corresponding to the key you have pressed only takes place if you press one of the key again.

MECHANICAL INSTALLATION AND DIMENSIONS

Care must be taken to avoid damage from electrostatic sources when handling this device.

In particular exposed connectors and, in some cases, exposed printed circuit boards are exceptionally vulnerable to electrostatic discharge.

⚠ WARNING

UNINTENDED EQUIPMENT OPERATION DUE TO ELECTROSTATIC DISCHARGE DAMAGE

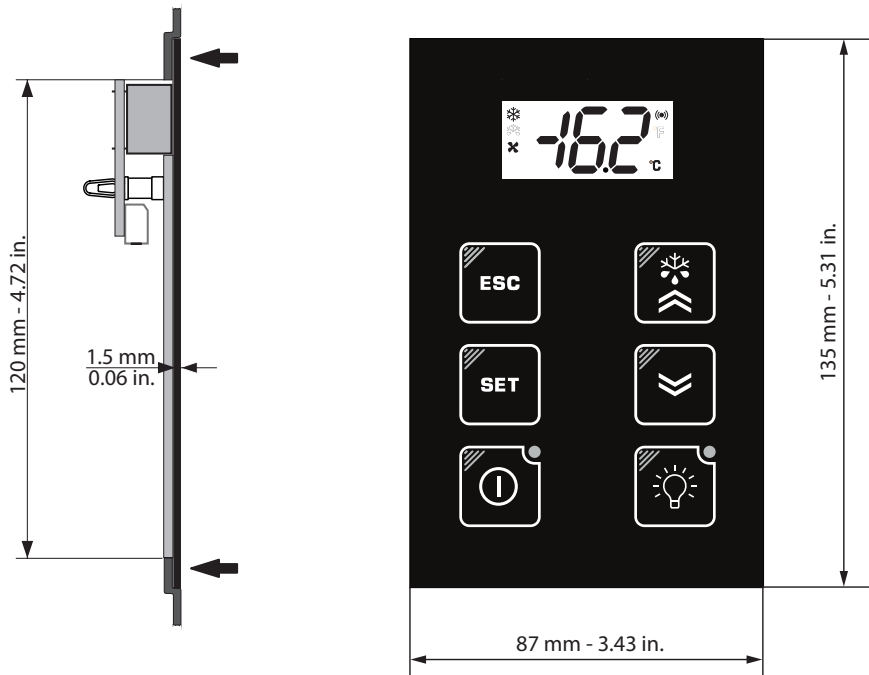
- Keep device in the protective conductive packaging until you are ready to install the equipment.
- Only install device in approved enclosures and / or locations that prevent casual access and provide electrostatic discharge protection as defined by IEC 1000-4-2.
- Use a conductive wrist strap or equivalent field force protective device attached to an earth ground when handling sensitive device.
- Always discharge yourself by touching a grounded surface or approved antistatic mat before handling the device.

Failure to follow these instructions can result in death, serious injury, or equipment damage.

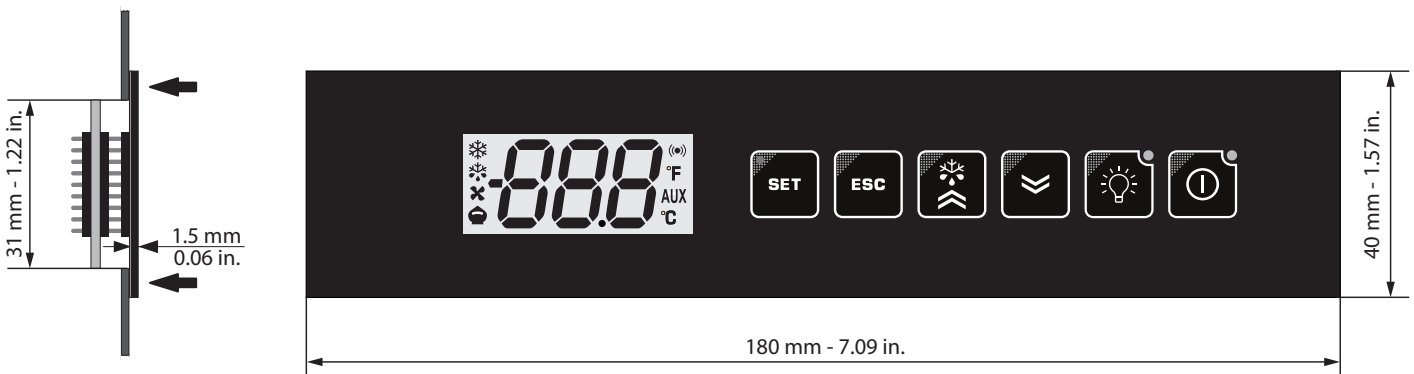
Do not install the **KDT** keypad in places subject to high humidity and/or dirt; it is intended for use in sites with ordinary or normal levels of pollution.

The **KDT** keypads dimensions are:

KDT vertical



KDT horizontal



The **KDT** keypads are suitable to be fitted to a STAINLESS STEEL flat surface.

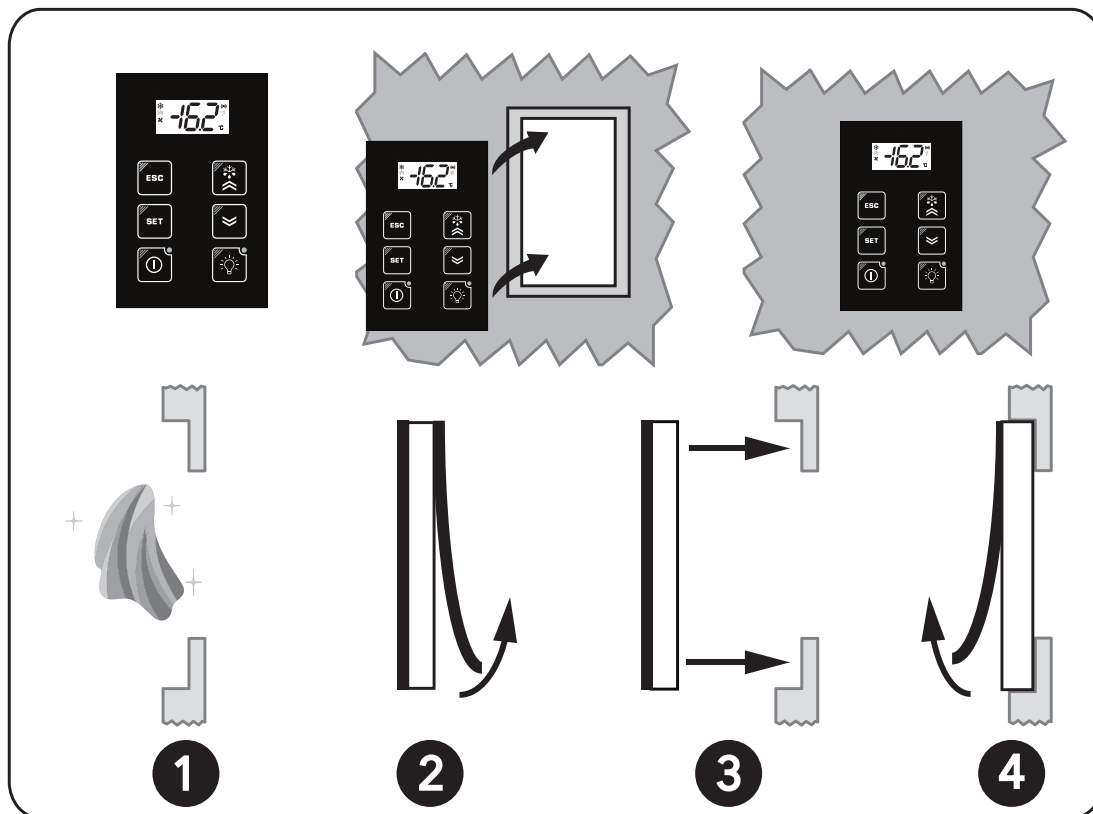
The fitting of **KDT** keypads can be done in 2 ways:

- Against the surface (protruding keypads)
- On a suitably outlined surface for flush mounting (**KDT vertical** only).

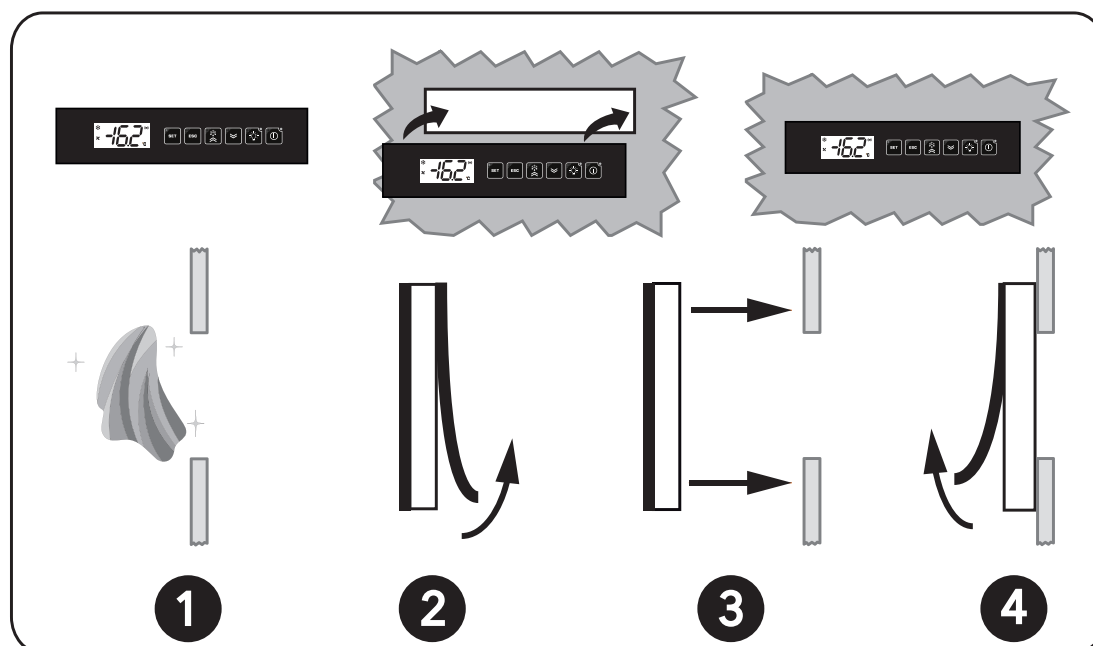
To install the keypad, proceed as follows:

1. Clean the surface to remove any greasy, dusty or dirty residues;
2. Remove the double-sided tape protection strip from the back of the keypad;
3. Stick the keypad inside the drilled surface previously made;
4. Remove the protective film from the front of the keypad.

KDT vertical



KDT horizontal



TECHNICAL DATA

	KDT vertical	KDT horizontal
Mounting:	panel-mounting (via double-sided adhesive) with 67x120 mm (2.64x4.72 in.) drilling template.	panel-mounting (via double-sided adhesive) with 150x31 mm (5.91x1.22 in.) drilling template.
Power supply:	12 Vdc ($\pm 10\%$) from power board (RTX/RTD/RTN and IWP750/760 SMPS series)	
Container:	Open board with Poly (methyl methacrylate) (PMMA) front panel	
Dimensions:	Front panel 87x135 mm (3.43x5.31 in.), thickness 1.5 mm (0,06 in.) Front panel 180x40 mm (7.09x1.57 in.), thickness 1.5 mm (0.06 in.)	
Connectors:	JST for connection to power board (Maximum length of connection: 100 m - 328 ft)	
Temperature:	Operating: -5.0 ... 55.0 °C (23.0 ... 131 °F) - Storage: -20.0 ... 60.0 °C (-4.0 ... 140 °F)	
Ambient humidity:	Operating / Storage: 10...90 %RH (non-condensing)	
Display:	White or blue display with 3 digits + sign	
Icons:	8 colour icons	
LEDs:	2 status LEDs (associated with ON/OFF and Light keys)	
Keys:	6 capacitive touch keys	
Keys feedback:	Buzzer and backlighting LEDs (KDT vertical only)	
Buzzer:	YES	

NOTE: For all technical and normative information not indicated in this section, refer to the "Technical Data" section of the documents relating to the power board to which the keypad is connected.

ELECTRICAL CONNECTIONS

DANGER

HAZARD OF ELECTRIC SHOCK, EXPLOSION, ARC FLASH OR ACCESS TO MOVING PARTS

- The final application must prevent the access to high voltage or moving parts through the hole for the KDT keypad mounting given that the KDT keypad cannot provide protection against this eventuality.
- Disconnect all power from all equipment including connected devices, prior to removing any covers or doors, or installing or removing any accessories, hardware, cables, or wires.
- Always use a properly rated voltage sensing device to confirm the power is off where and when indicated.
- Replace and secure all covers, accessories, hardware, cables and wires before applying power to the device.
- For all the devices where this is provided, confirm that a proper ground connection exists before applying power to the unit.
- Use only the specified voltage when operating this equipment and any associated products.

Failure to follow these instructions will result in death or serious injury.

DANGER

POTENTIAL FOR EXPLOSION

Install and use this equipment in non-hazardous locations only.

Failure to follow these instructions will result in death or serious injury.

Electrical equipment should be installed, operated, serviced, and maintained only by qualified personnel.
No responsibility is assumed by Eliwell for any consequences arising out of the use of this material.

DIAGNOSTICS

If there is no communication between the keypad and the power board for 60 seconds or longer, the **KDT** keypad displays **E7**.

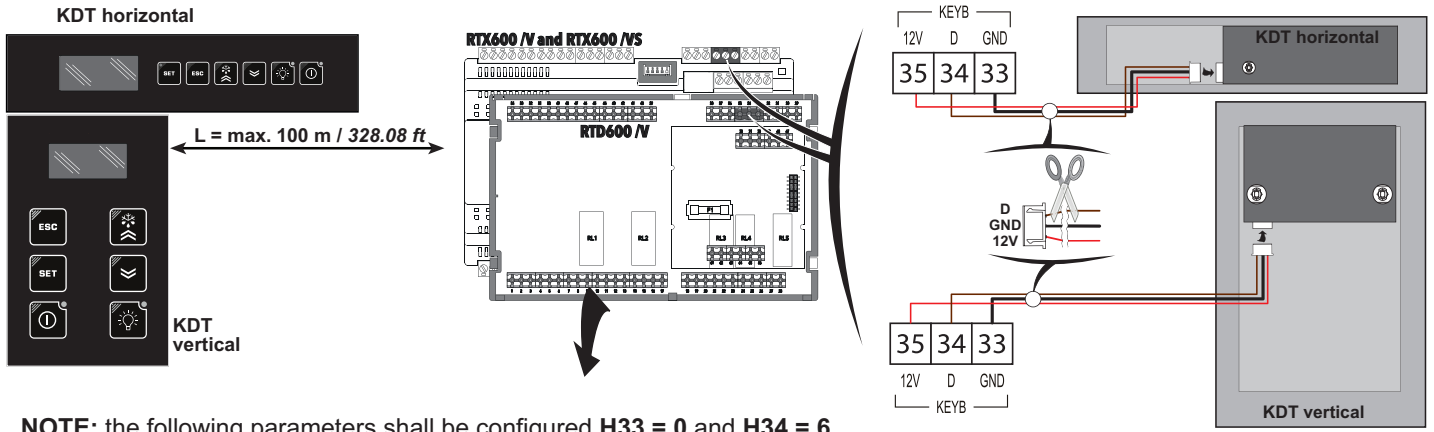
If this happens, the keypad will remain completely inactive with the exception of the display, on which the label **E7** will appear. The communication loss is automatically reset as soon as communication is restored.

If the keypad is connected to one of the **RTX-RTN-RTD600** family power board, the **E7** could indicate that Pb7 is inoperable as well.

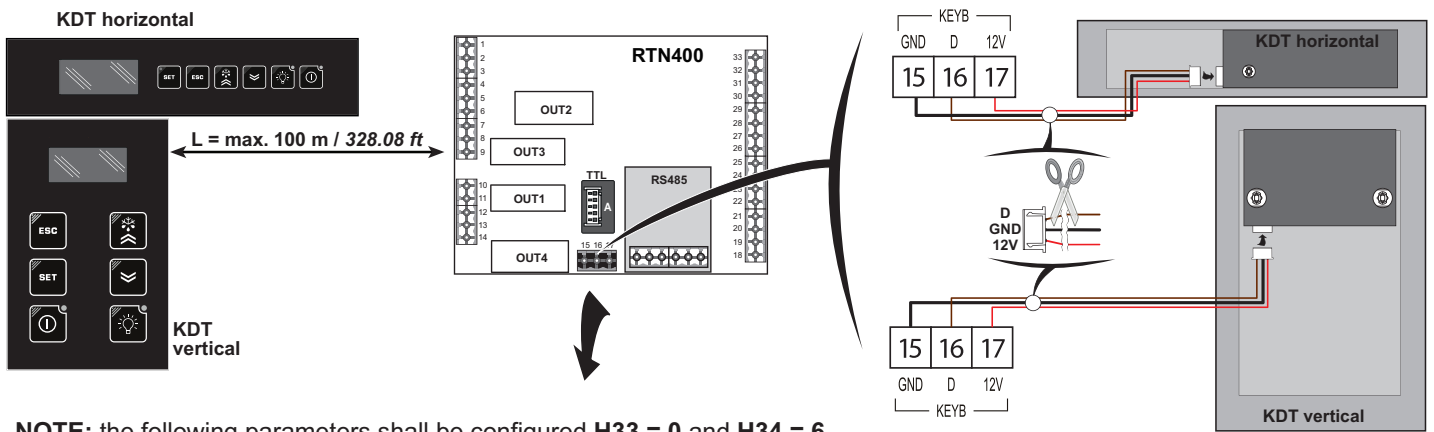
CONNECTIONS

Each power board can be connected to a single **KDT** keypad (user terminal) by means of the JST connector located on the keypad. For connection to power board it is necessary to remove one of the two connectors.

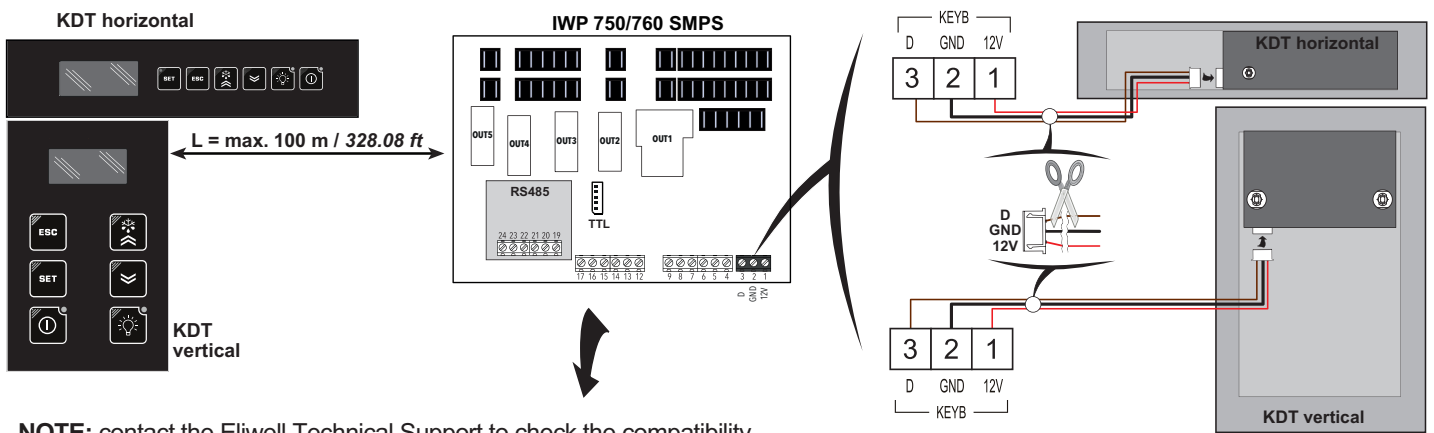
RTX/RTN/RTD600 + KDT CONNECTION



RTN400 + KDT CONNECTION



IWP750/760 SMPS + KDT CONNECTION



RESPONSIBILITY AND RESIDUAL RISKS

ELIWELL CONTROLS SRL declines any liability for damage due to:

- Installation/use other than expressly specified and, in particular, in conflict with the safety prescriptions set down in regulations and/or specified in this document.;
- Use on applications that do not provide adequate protection against electric shocks, water or dust in the adopted mounting conditions;
- Use on applications that allowing access to dangerous parts without having to use tools;
- Tampering with and/or modification of the product;
- Installation/use on applications that do not comply with statutory laws and regulations.

DISCLAIMER

This document is the exclusive property of ELIWELL CONTROLS SRL and may not be reproduced or circulated without the express permission of ELIWELL CONTROLS. While all possible care has been taken to ensure the accuracy of this document, ELIWELL CONTROLS SRL cannot accept liability for any damage resulting from its use. The same applies to any person or company involved in preparing and editing this document. ELIWELL CONTROLS SRL reserves the right to make aesthetic or functional changes at any time without notice.

CONDITIONS OF USE

Permitted use

For safety reasons, the device must be installed and used according to the instructions provided.

In particular, parts carrying dangerous voltages must not be accessible in normal conditions.

The device must be adequately protected from water and dust with regard to the application, and must only be accessible using tools (with the exception of the front panel). The device is suitable for use in household refrigeration appliances and/or similar equipment and has been tested for safety aspects in accordance with the harmonised European reference standards.

Improper use

Any use other than that expressly permitted is prohibited.

DISPOSAL



The appliance (or the product) must be disposed of separately in compliance with the local standards in force on waste disposal.

Eliwell Controls s.r.l.

Via dell'Industria, 15 • Z.I. Paludi

32010 Pieve d'Alpago (BL) - ITALY

T: +39 0437 986 111

F: +39 0437 989 066

www.eliwell.com

Technical Customer Support:

T: +39 0437 986 300

E: techsuppeliwell@schneider-electric.com

Sales:

T: +39 0437 986 100 (Italy)

T: +39 0437 986 200 (other countries)

E: saleseliwell@schneider-electric.com



ISO 9001



cod. 9IS24304-1 • KDT • rel.07/16 • EN

© Eliwell Controls s.r.l. 2016 • All rights reserved.