

EWCM9900

- Serial Communication Protocol -
Compressor Rack Controller on 18DIN Rail



CONTENTS

1	Modbus functions and resources	3
1.1	Data format (RTU)	3
1.2	Network	4
1.3	Modbus functions available and data areas	5
1.4	Address Configuration	5
1.5	Address tables	5
1.5.1	Description of parameters	5
1.5.2	Parameters table	6
1.5.3	Client table	20
2	Disclaimer	51

1 MODBUS FUNCTIONS AND RESOURCES

Modbus is a client/server communication protocol between devices connected on a *network*.

Modbus instruments communicate using a master/slave technique in which only one device (master) can send messages.

The other devices on the *network* (slave) respond by returning the data requested by the master or performing the action indicated in the message sent. A slave is a device connected to the *network* that processes information and sends the results to the master using the Modbus protocol.

The master can send messages to individual slaves, or send messages to the whole *network* (broadcast), whereas the slave instruments respond to the messages only individually and to the master device.

The Modbus standard used by Eliwell provides for the use of RTU coding for data transmission.

1.1 Data format (RTU)

The coding model used defines the structure of messages transmitted on the *network* and the way in which this information is decoded. The type of coding is normally selected according to specific parameters (baud rate, parity, etc.), also, certain devices only support certain coding models, however it must be the same for all the instruments connected to a Modbus *network*.

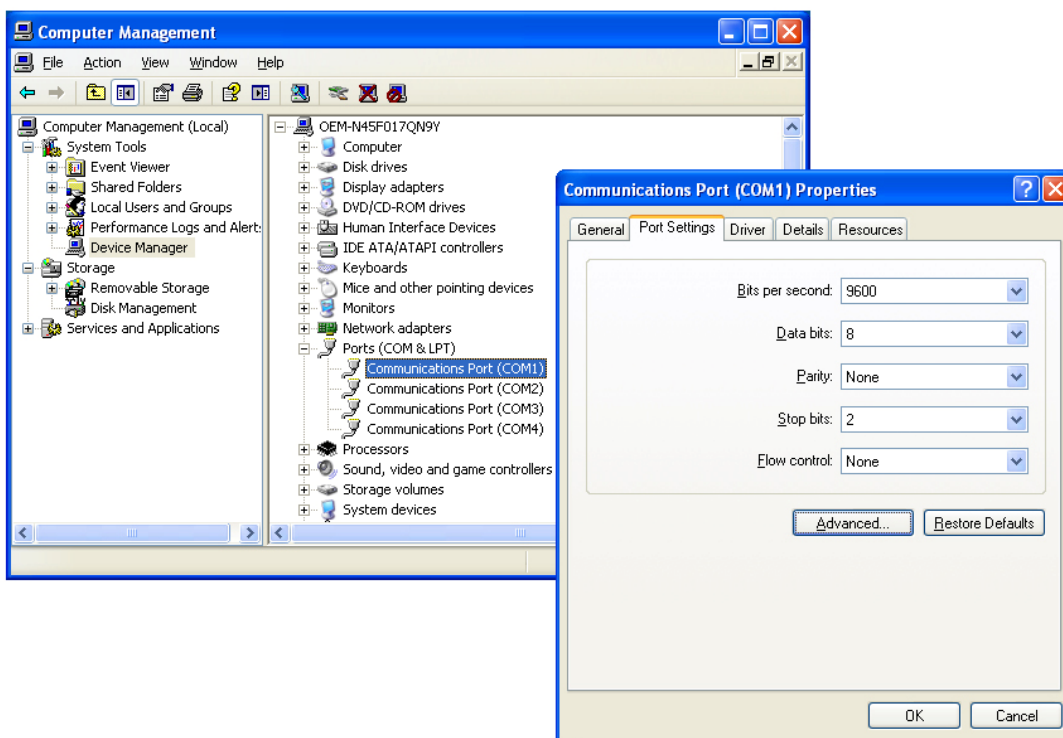
The protocol uses the binary RTU method with the byte made up as follows:

8 bits for data, even parity configurable, 1 stop bit.

PLEASE NOTE: if you set parameter 675 – PtytLV = 0 (NONE) then

It is mandatory to set the COM stop bit of your PC to 2

My Computer > Properties > Hardware > Device Manager > Ports (COM & LPT) > Communications Port > Port Settings > Stop bits = 2



NOTE: the transmission speed could be set to 9600 baud.

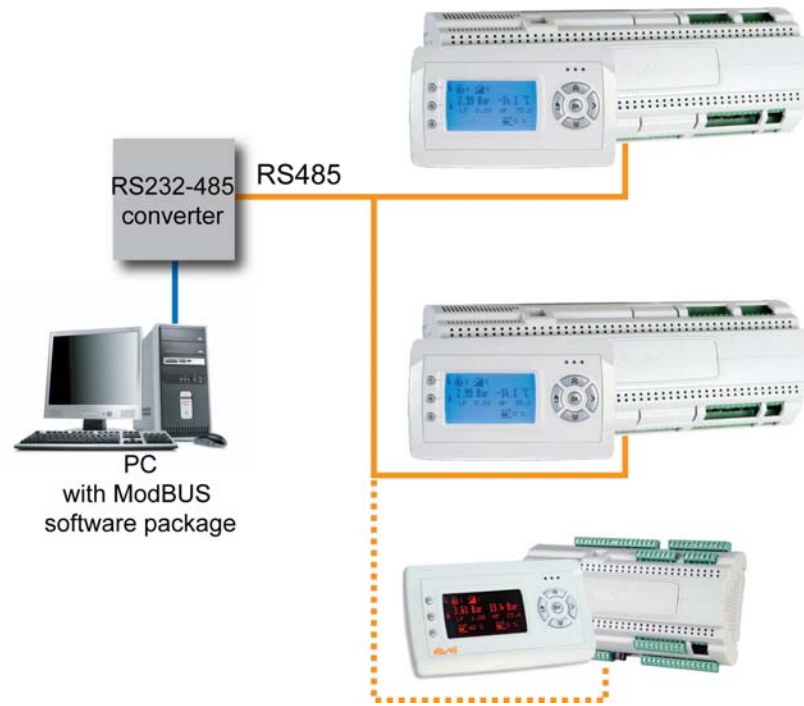
Setting the parameters allows the *instrument* to be fully configurable

They can be modified by means of:

- instrument keyboard
- copy Card
- sending the data using the ModBus protocol, directly to an individual instrument, or by broadcast, using *address* 0 (broadcast)

ModBus to multiple device connection diagram

1.2 Network





1.3 Modbus functions available and data areas

Function Code	Command description
3	Read 16 consecutive registers for Client side Read 1 single register for parameters.
16	Write 15 consecutive registers for Client side Write 1 register for parameters

43	Reading instrument ID. The following fields can be read:	Field code	Field description
		0	Manufacturer ID(="Invensys")
		1	Instrument polycarbonate ID
		2	Instrument family(msk)/version ID

IMPORTANT! The reading of 2 registers (WORD) must be requested to obtain 1 in response. If reading of only one register is requested a reading of the highest byte will be obtained.

IMPORTANT! To write values to WORD it is necessary to send a write request with 2 registers, and a dimension 2 response will be obtained.

1.4 Address Configuration

The *address* of a device inside a ModBus message is made up of one byte and is formed of the family code and the instrument code, made up of parameters dEA and FAA respectively.

The *address* (Device *Address*) is thus formed of two nibbles:

- **dEA:** low nibble
- **FAA:** high nibble

INSTRUMENT CONFIGURATION PARAMETERS			
Par.	Description	Range	Value
672 - dEA	Family serial <i>address</i>	0...14	0
671 - FAA	Device serial <i>address</i>	0...14	0

To calculate the *address* $address = dEA \times 16 + FAA$
 Example: *address* (HEX) 16 (dEA=01; FAA=00)

Address 0 is used for broadcast messages, which are recognised by all slaves. Slaves do not respond to a broadcast type request.

1.5 Address tables

1.5.1 Description of parameters

The *address tables* contain the information required to read, write and decode each individual resource accessible in the instrument.

There are two tables:

- the *parameters table* contains all the device configuration parameters stored in the instrument's non-volatile memory.
- the *client table* includes all the I/O and alarm status resources available in the instrument's volatile memory.

Description of columns:

INDEX For the *parameters table* this value represents the order in which the parameter is displayed in the instrument's menu. For the *client table* this value is not significant.

FOLDER This indicates the *label* of the *folder* containing the parameter in question. For the *client table* this value is not significant.

LABEL This indicates the *label* used to display the **parameters** in the instrument's menu.

ADDRESS The whole part represents the *address* of the MODBUS register containing the value of the resource to be read or written in the instrument. The value after the point indicates the position of the most significant data bit inside the register; if not indicated it is taken as zero. This information is always provided when the register contains more than one information item, and it is necessary to distinguish which bits actually represent the data (the working size of the data indicated in the column *DATA SIZE* is also taken into consideration). Given that the modbus registers have the size of one WORD (16 bit), the *index* number after the point can vary from 0 (least significant bit –LSb–) to 15 (most significant bit –MSb–). Examples (in binary form the least significant bit is the first on the right):

ADDRESS	Contents of register	DATA SIZE	Value
8806	1350 (0000010101000110)	WORD	1350
8806	1350 (000001010 1000110)	Byte	70
8806,8	1350 (000001010 1000110)	Byte	5
8806,14	1350 (0000010101000110)	1 bit	0
8806,7	1350 (00000 1010 1000110)	4 bit	10

Important: when the register contains more than one data item, during the write operation proceed as follows:

- read current register value
- modify the bits that represent the resource concerned
- write the register

R/W Indicates the option of reading or writing the resource:

R	the resource is read-only
W	the resource is write-only
RW	the resource can be both read and written

DATA SIZE Indicates the size of the data in bits.

WORD	=	16 bits
Byte	=	8 bits
"n" bit	=	0...15 bits based on the value of "n"

CPL When the field indicates "Y", the value read by the register requires conversion, because the value represents a number with a sign. In the other cases the value is always positive or null.

To carry out conversion, proceed as follows:

- if the value in the register is between 0 and 32.767, the result is the value itself (zero and positive values)
- if the value in the register is between 32.768 and 65.535, the result is the value of the register – 65.536 (negative values)

RANGE Describes the interval of values that can be assigned to the parameter. It can be correlated with other parameters in the instrument (indicated with the parameter *label*).

DEFAULT Indicates the factory-set value for the standard model of the instrument.

EXP This is the multiplier *index* to be applied for converting the value read from the register to the values indicated in the *RANGE* and *DEFAULT* column to convert them into the final values according to the measurement unit indicated in the column *M.U.*

The multiplier is calculated with the base 10 exponential function and with the exponent indicated in the *EXP* column. When not indicated the value is 0. The following values are valid:

Value	=	Corresponding multiplier
-2	=	10 ⁻² (0.01)
-1	=	10 ⁻¹ (0.1)
0	=	10 ⁰ (1)
1	=	10 ¹ (10)
2	=	10 ² (100)

M.U. Measurement unit for values converted according to the rules indicated in the *CPL* and *EXP* columns.

1.5.2 Parameters table

(see next page)

Please Note: Refer to MSK330

NOTE: ALL the values in bar / PSI are expressed in Absolute Pressure and are dependent on parameter 543 - rELP where not expressly indicated

NOTE: Calibration and threshold always displayed as an absolute value. Not dependent on parameter 543 – rELP

Calibration Pb

NOTE: Inputs are shown with 2 different values

- Pb1...Pb4 in °C/°F

Calibration and threshold SIG

NOTE: SIG Inputs are shown with 2 different values depending on

- SIG1 in bar/PSI depending on 650 - HSig1 - High Precision
- SIG2 in bar/PS depending on 651 - HSig2 - High Precision
- SIG3 in bar/PS depending on 652 - HSig2 - High Precision

Example: SIG1

Suction

- 650-Hsig1 - High Precision = 1 --> EXP = -2
- 650-HSig1 - High Precision = 0 --> EXP = -1

discharge

- 650-Hsig1 - High Precision = 1 --> EXP = -1
- 650-HSig1 - High Precision = 0 --> EXP = 0

NOTE: Some parameters are duplicated/quadruplicated depending on the unit of measurement shown on the display.

For example, the parameter for the 131 - LSE Compressors minimum setpoint *folder* is quadrupled as:

- 131 - LSE minimum setpoint °C
- 131 - LSE minimum setpoint °F
- 131 - LSE minimum setpoint bar
- 131 - LSE minimum setpoint PSI

In the following *parameters table*, the parameter is repeated 4 times on 4 separate lines.

INDEX	FOLDER	LABEL	ADDRESS	R/W	DESCRIPTION	DATA SIZE	CPL	RANGE	DEFAULT	EXP	M.U.	Notes
1	Operating passwords	634 - PSW1	1	RW	Password 1	WORD	Y	0 ... 5	*****	0	string	
2	Operating passwords	635 - PSW2	2	RW	Password 2	WORD	Y	0 ... 5	*****	0	string	
3	Operating passwords	636 - PSW3	3	RW	Password 3	WORD	Y	0 ... 5	*****	0	string	
4	Operating passwords	637 - PSW4	4	RW	Password 4	WORD	Y	0 ... 5	*****	0	string	
5	Operating passwords	638 - PSW5	5	RW	Password 5	WORD	Y	0 ... 5	*****	0	string	
6	Files Setup	452 - USId1	6	RW	User String 1	WORD	Y	0 ... 20		0	string	
7	Files Setup	453 - USId2	7	RW	User String 2	WORD	Y	0 ... 20		0	string	
13	Files Setup	459 - rECF	13	RW	REC file name	WORD	Y	0 ... 10		0	string	
14	Files Setup	460 - HISF	14	RW	HIS file name	WORD	Y	0 ... 10		0	string	
15	Files Setup	461 - dAtF	15	RW	DAT file name	WORD	Y	0 ... 10		0	string	
16	Files Setup	462 - gLoF	16	RW	GLO file name	WORD	Y	0 ... 10		0	string	
103	Configuration	639 - tAb	103	RW	TAB	WORD	Y	0 ... 32767	1	0	num	
104	Configuration	640 - rtCE	104	RW	Enable RTC	WORD	Y	0 ... 1	1	0	flag	
105	Configuration	641 - FtyP	105	RW	Gas type	WORD	Y	0 ... 15	4	0	num	
110	Configuration	646 - Sig12	110	RW	SIG 1/2 probe type	WORD	Y	0 ... 2	0	0	num	

INDEX	FOLDER	LABEL	ADDRESS	R/W	DESCRIPTION	DATA SIZE	CPL	RANGE	DEFAULT	EXP	M.U.	Notes
111	Configuration	647 - SIg34	111	RW	SIG 3/4 probe type	WORD	Y	0 ... 3	0	0	num	
112	Configuration	648 - Pb12	112	RW	PB 1/2 probe type	WORD	Y	3 ... 6	4	0	num	
113	Configuration	649 - Pb34	113	RW	PB 3/4 probe type	WORD	Y	3 ... 6	4	0	num	
114	Configuration	650 - HSIg1	114	RW	SIG1 High precision	WORD	Y	0 ... 1	1	0	flag	
115	Configuration	651 - HSIg2	115	RW	SIG2 High precision	WORD	Y	0 ... 1	1	0	flag	
116	Configuration	652 - AoS1	116	RW	Select V1 or I1	WORD	Y	0 ... 1	1	0	num	
117	Configuration	653 - AoS2	117	RW	Select V2 or I2	WORD	Y	0 ... 1	1	0	num	
118	Configuration	654 - AoS3	118	RW	Select V3 or I3	WORD	Y	0 ... 1	1	0	num	
119	Configuration	655 - CALSIg1	119	RW	SIG1 calibration	WORD	Y	-1000 ... 1000	0	-2	bar	Always displayed as an absolute value Do not depend on parameter 543 - rELP
120	Configuration	655 - CALSIg1	120	RW	SIG1 calibration	WORD	Y	-1450 ... 1450	0	-1	Psi	
121	Configuration	655 - CALSIg1	121	RW	SIG1 calibration	WORD	Y	-100 ... 100	0	-1	bar	
122	Configuration	655 - CALSIg1	122	RW	SIG1 calibration	WORD	Y	-145 ... 145	0	0	Psi	
123	Configuration	655 - CALSIg1	123	RW	SIG1 calibration	WORD	Y	-100 ... 100	0	-1	°C	
124	Configuration	655 - CALSIg1	124	RW	SIG1 calibration	WORD	Y	-180 ... 180	0	-1	°F	
125	Configuration	656 - CALSIg2	125	RW	SIG2 calibration	WORD	Y	-1000 ... 1000	0	-2	bar	
126	Configuration	656 - CALSIg2	126	RW	SIG2 calibration	WORD	Y	-1450 ... 1450	0	-1	Psi	
127	Configuration	656 - CALSIg2	127	RW	SIG2 calibration	WORD	Y	-100 ... 100	0	-1	bar	
128	Configuration	656 - CALSIg2	128	RW	SIG2 calibration	WORD	Y	-145 ... 145	0	0	Psi	
129	Configuration	656 - CALSIg2	129	RW	SIG2 calibration	WORD	Y	-100 ... 100	0	-1	°C	
130	Configuration	656 - CALSIg2	130	RW	SIG2 calibration	WORD	Y	-180 ... 180	0	-1	°F	
131	Configuration	657 - CALSIg3	131	RW	SIG3 calibration	WORD	Y	-100 ... 100	0	-1	bar	
132	Configuration	657 - CALSIg3	132	RW	SIG3 calibration	WORD	Y	-145 ... 145	0	0	Psi	
133	Configuration	657 - CALSIg3	133	RW	SIG3 calibration	WORD	Y	-100 ... 100	0	-1	°C	
134	Configuration	657 - CALSIg3	134	RW	SIG3 calibration	WORD	Y	-180 ... 180	0	-1	°F	
139	Configuration	659 - CALPb1	139	RW	PB1 calibration	WORD	Y	-100 ... 100	0	-1	°C	
140	Configuration	659 - CALPb1	140	RW	PB1 calibration	WORD	Y	-180 ... 180	0	-1	°F	
141	Configuration	660 - CALPb2	141	RW	PB2 calibration	WORD	Y	-100 ... 100	0	-1	°C	
142	Configuration	660 - CALPb2	142	RW	PB2 calibration	WORD	Y	-180 ... 180	0	-1	°F	
143	Configuration	661 - CALPb3	143	RW	PB3 calibration	WORD	Y	-100 ... 100	0	-1	°C	
144	Configuration	661 - CALPb3	144	RW	PB3 calibration	WORD	Y	-180 ... 180	0	-1	°F	
145	Configuration	662 - CALPb4	145	RW	PB4 calibration	WORD	Y	-100 ... 100	0	-1	°C	
146	Configuration	662 - CALPb4	146	RW	PB4 calibration	WORD	Y	-180 ... 180	0	-1	°F	
147	Configuration	663 - LtSIg1	147	RW	Lower threshold SIG1	WORD	Y	-100 ... 100	50	-2	bar	Always displayed as an absolute value Do not depend on
148	Configuration	663 - LtSIg1	148	RW	Lower threshold SIG1	WORD	Y	-145 ... 145	72	-1	Psi	
149	Configuration	663 - LtSIg1	149	RW	Lower threshold SIG1	WORD	Y	-10 ... 10	0	-1	bar	
150	Configuration	663 - LtSIg1	150	RW	Lower threshold SIG1	WORD	Y	-14 ... 14	0	0	Psi	
151	Configuration	664 - UtSIg1	151	RW	Upper threshold SIG1	WORD	Y	100 ... 1000	800	-2	bar	

INDEX	FOLDER	LABEL	ADDRESS	R/W	DESCRIPTION	DATA SIZE	CPL	RANGE	DEFAULT	EXP	M.U.	Notes
152	Configuration	664 - UtSig1	152	RW	Upper threshold SIG1	WORD	Y	145 ... 1450	1160	-1	Psi	parameter 543 - rELP
153	Configuration	664 - UtSig1	153	RW	Upper threshold SIG1	WORD	Y	10 ... 1000	1000	-1	bar	
154	Configuration	664 - UtSig1	154	RW	Upper threshold SIG1	WORD	Y	14 ... 1450	1450	0	Psi	
155	Configuration	665 - LtSig2	155	RW	Lower threshold SIG2	WORD	Y	-100 ... 100	50	-2	bar	
156	Configuration	665 - LtSig2	156	RW	Lower threshold SIG2	WORD	Y	-145 ... 145	72	-1	Psi	
157	Configuration	665 - LtSig2	157	RW	Lower threshold SIG2	WORD	Y	-10 ... 10	0	-1	bar	
158	Configuration	665 - LtSig2	158	RW	Lower threshold SIG2	WORD	Y	-14 ... 14	0	0	Psi	
159	Configuration	666 - UtSig2	159	RW	Upper threshold SIG2	WORD	Y	100 ... 1000	800	-2	bar	
160	Configuration	666 - UtSig2	160	RW	Upper threshold SIG2	WORD	Y	145 ... 1450	1160	-1	Psi	
161	Configuration	666 - UtSig2	161	RW	Upper threshold SIG2	WORD	Y	10 ... 1000	1000	-1	bar	
162	Configuration	666 - UtSig2	162	RW	Upper threshold SIG2	WORD	Y	14 ... 1450	1450	0	Psi	
163	Configuration	667 - LtSig3	163	RW	Lower threshold SIG3	WORD	Y	-10 ... 10	10	-1	bar	
164	Configuration	667 - LtSig3	164	RW	Lower threshold SIG3	WORD	Y	-14 ... 14	14	0	Psi	
165	Configuration	668 - UtSig3	165	RW	Upper threshold SIG3	WORD	Y	10 ... 1000	310	-1	bar	
166	Configuration	668 - UtSig3	166	RW	Upper threshold SIG3	WORD	Y	14 ... 1450	449	0	Psi	
171	Addressing	671 - FAA	171	RW	Family <i>address</i>	WORD	Y	0 ... 14	0	0	num	
172	Addressing	672 - dEA	172	RW	Controller <i>address</i>	WORD	Y	0 ... 14	0	0	num	
173	Addressing	673 - PtStLV	173	RW	Protocol selection	WORD	Y	2 ... 3	2	0	num	
174	Addressing	674 - bdrttlLV	174	RW	Baud Rate	WORD	Y	0 ... 2	0	0	num	
175	Addressing	675 - PtytLV	175	RW	Parity bit	WORD	Y	0 ... 2	1	0	num	
333	QuickStart	501 - tyPE	512	RW	Type of plant	WORD	Y	0 ... 2	0	0	num	
334	QuickStart	502 - PC1	513	RW	COMP 1 power	WORD	Y	1 ... 255	3	0	num	
335	QuickStart	503 - PC2	514	RW	COMP 2 power	WORD	Y	1 ... 255	3	0	num	
336	QuickStart	504 - PC3	515	RW	COMP 3 power	WORD	Y	1 ... 255	3	0	num	
337	QuickStart	505 - PC4	516	RW	COMP 4 power	WORD	Y	1 ... 255	3	0	num	
338	QuickStart	506 - PC5	517	RW	COMP 5 power	WORD	Y	1 ... 255	1	0	num	
339	QuickStart	507 - PC6	518	RW	COMP 6 power	WORD	Y	1 ... 255	1	0	num	
340	QuickStart	508 - PC7	519	RW	COMP 7 power	WORD	Y	1 ... 255	1	0	num	
341	QuickStart	509 - PC8	520	RW	COMP 8 power	WORD	Y	1 ... 255	1	0	num	
342	QuickStart	510 - PC9	521	RW	COMP 9 power	WORD	Y	1 ... 255	1	0	num	
343	QuickStart	511 - PC10	522	RW	COMP 10 power	WORD	Y	1 ... 255	1	0	num	
344	QuickStart	512 - PC11	523	RW	COMP 11 power	WORD	Y	1 ... 255	1	0	num	
345	QuickStart	513 - PC12	524	RW	COMP 12 power	WORD	Y	1 ... 255	1	0	num	
810	QuickStart	514 - EAAL	525	RW	Abilita DO Allarmi	WORD	Y	0 ... 1	0	0	flag	
811	QuickStart	515 - EACI	526	RW	Enable DO alarms	WORD	Y	0 ... 1	0	0	flag	
812	QuickStart	516 - EAFI	527	RW	Enable COMP INV	WORD	Y	0 ... 1	0	0	flag	
813	QuickStart	517 - EACIE	528	RW	Enable INV FANS	WORD	Y	0 ... 1	0	0	flag	

INDEX	FOLDER	LABEL	ADDRESS	R/W	DESCRIPTION	DATA SIZE	CPL	RANGE	DEFAULT	EXP	M.U.	Notes
814	QuickStart	518 - EAFIE	529	RW	Enable COMP INV ERR	WORD	Y	0 ... 1	0	0	flag	
815	QuickStart	519 - EAgA	530	RW	Enable ERR INV FANS	WORD	Y	0 ... 1	0	0	flag	
346	QuickStart	520 - Fnty	531	RW	Fan mode	WORD	Y	0 ... 2	1	0	num	
347	QuickStart	521 - nFn	532	RW	Number of fans	WORD	Y	1 ... 8	5	0	num	
348	QuickStart	522 - CtyP	533	RW	Circuit Type 1	WORD	Y	0 ... 2	0	0	num	
349	QuickStart	523 - CPnU	534	RW	No. COMP circuit 1	WORD	Y	0 ... 12	4	0	num	
350	QuickStart	524 - CtyP2	535	RW	Circuit Type 2	WORD	Y	0 ... 3	0	0	num	
351	QuickStart	525 - CPnU2	536	RW	No. COMP circuit 2	WORD	Y	0 ... 12	4	0	num	
816	Display	541 - LAng	783	RW	Select language	WORD	Y	0 ... 1	0	0	flag	
367	Display	542 - toUt	784	RW	Exit menu time	WORD	Y	10 ... 1000	300	0	sec	
817	Display	543 - rELP	785	RW	Min suction UM	WORD	Y	0 ... 1	1	0	flag	
818	Display	544 - AbS	786	RW	Max suction UM	WORD	Y	0 ... 1	1	0	flag	
370	Display	547 - UMCP	789	RW	Suction UM	WORD	Y	0 ... 3	2	0	num	
371	Display	548 - UMFn	790	RW	Discharge UM	WORD	Y	0 ... 3	2	0	num	
819	Display	549 - LoCK	791	RW		WORD	Y	0 ... 1	0	0	flag	
372	Display	550 - HKUnL	792	RW	Unlock keypad hotk	WORD	Y	0 ... 12	8	0	num	
955	Functions	554 - drEn	1682	RW	Log Data	WORD	Y	0 ... 1	0	0	flag	
956	Functions	555 - HIEn	1683	RW	Log History	WORD	Y	0 ... 1	0	0	flag	
421	Functions	556 - ESFn	1684	RW	Energy Saving Type	WORD	Y	0 ... 7	0	0	num	
422	Functions	557 - Hrto	1685	RW	Max OUT Temp. Rec.	WORD	Y	-1000 ... 6000	400	-1	°C	
423	Functions	558 - Hrdt	1686	RW	Recovery temp. delta	WORD	Y	-1000 ... 6000	100	-1	°C	
424	Functions	557 - Hrto	1687	RW	Max OUT Temp. Rec.	WORD	Y	-1500 ... 9999	1040	-1	°F	
425	Functions	558 - Hrdt	1688	RW	Recovery temp. delta	WORD	Y	-1500 ... 9999	180	-1	°F	
426	Functions	559 - LrCd	1689	RW	Liq. return cont. delay	WORD	Y	0 ... 999	15	0	min	
427	Functions	560 - Lron	1690	RW	DC liq. return ON time	WORD	Y	0 ... 999	60	0	sec	
428	Functions	561 - LroF	1691	RW	DC liq. return OFF time	WORD	Y	0 ... 999	60	0	sec	
429	Functions	562 - LrCd2	1692	RW	Liq. return cont. delay	WORD	Y	0 ... 999	15	0	min	
430	Functions	563 - Lron2	1693	RW	DC liq. return ON time	WORD	Y	0 ... 999	60	0	sec	
431	Functions	564 - LroF2	1694	RW	DC liq. return OFF time	WORD	Y	0 ... 999	60	0	sec	
434	Safety measures	565 - odo	1844	RW	Output Delay at P-On	WORD	Y	0 ... 999	1	0	sec	
435	Safety measures	566 - PAo	1845	RW	Exclude Alarms POn	WORD	Y	0 ... 999	15	0	min	
436	Safety measures	567 - tAo	1846	RW	HP-LP bypass time	WORD	Y	0 ... 999	0	0	min	
437	Safety measures	568 - Aro	1847	RW	Ackn. alarm time	WORD	Y	0 ... 9999	15	0	min	
438	Safety measures	569 - PrSAE	1848	RW	Suction HP/LP Alarm	WORD	Y	0 ... 3	2	0	num	
439	Safety measures	570 - PSAE	1849	RW	Suction HP/LP Alarm	WORD	Y	0 ... 3	2	0	num	
440	Safety measures	571 - gtSAE	1850	RW	Gas Level Alarm	WORD	Y	0 ... 3	3	0	num	
441	Safety measures	572 - gLSAE	1851	RW	Gas Escape Alarm	WORD	Y	0 ... 3	1	0	num	

INDEX	FOLDER	LABEL	ADDRESS	R/W	DESCRIPTION	DATA SIZE	CPL	RANGE	DEFAULT	EXP	M.U.	Notes
442	Safety measures	573 - PrdAE	1852	RW	Delivery HP/LP Alarm	WORD	Y	0 ... 3	2	0	num	
443	Safety measures	574 - PdAE	1853	RW	Delivery HP/LP Alarm	WORD	Y	0 ... 3	2	0	num	
444	Safety measures	575 - FtAE	1854	RW	Fan th.switch alarm	WORD	Y	0 ... 3	2	0	num	
445	Safety measures	576 - FlnAE	1855	RW	Fan Inv Saf Alarm	WORD	Y	0 ... 3	2	0	num	
446	Safety measures	577 - SFAE	1856	RW	Fan Mainten. Alarm	WORD	Y	0 ... 3	1	0	num	
447	Safety measures	578 - CSAE	1857	RW	Comp. Blocked Alarm	WORD	Y	0 ... 3	2	0	num	
448	Safety measures	579 - ClnAE	1858	RW	Comp. Inv. Saf. Alarm	WORD	Y	0 ... 3	2	0	num	
449	Safety measures	580 - SCAE	1859	RW	Comp. Main. Alarm	WORD	Y	0 ... 3	1	0	num	
450	Safety measures	581 - oLAE	1860	RW	Oil Level Alarm	WORD	Y	0 ... 3	1	0	num	
451	Safety measures	582 - gAAE	1861	RW	General Alarm	WORD	Y	0 ... 3	2	0	num	
452	Safety measures	583 - rtCAE	1862	RW	RTC Alarm	WORD	Y	0 ... 3	1	0	num	
453	Safety measures	701 - HPPAE	1863	RW	Prev. Tim. Alarm	WORD	Y	0 ... 1	1	0	num	
454	Resource allocation	584 - H201	2304	RW	Relay OUT1	WORD	Y	-93 ... 93	9	0	num	
455	Resource allocation	585 - H202	2305	RW	Relay OUT2	WORD	Y	-93 ... 93	19	0	num	
456	Resource allocation	586 - H203	2306	RW	Relay OUT3	WORD	Y	-93 ... 93	33	0	num	
457	Resource allocation	587 - H204	2307	RW	Relay OUT4	WORD	Y	-93 ... 93	34	0	num	
458	Resource allocation	588 - H205	2308	RW	Relay OUT5	WORD	Y	-93 ... 93	20	0	num	
459	Resource allocation	589 - H206	2309	RW	Relay OUT6	WORD	Y	-93 ... 93	38	0	num	
460	Resource allocation	590 - H207	2310	RW	Relay OUT7	WORD	Y	-93 ... 93	39	0	num	
461	Resource allocation	591 - H208	2311	RW	Relay OUT8	WORD	Y	-93 ... 93	21	0	num	
462	Resource allocation	592 - H209	2312	RW	Relay OUT9	WORD	Y	-93 ... 93	43	0	num	
463	Resource allocation	593 - H210	2313	RW	Relay OUT10	WORD	Y	-93 ... 93	44	0	num	
464	Resource allocation	594 - H211	2314	RW	Relay OUT11	WORD	Y	-93 ... 93	22	0	num	
465	Resource allocation	595 - H212	2315	RW	Relay OUT12	WORD	Y	-93 ... 93	48	0	num	
466	Resource allocation	596 - H213	2316	RW	Relay OUT13	WORD	Y	-93 ... 93	49	0	num	
467	Resource allocation	597 - H214	2317	RW	Relay OUT14	WORD	Y	-93 ... 93	93	0	num	
468	Resource allocation	598 - H215	2318	RW	Relay OUT15	WORD	Y	-93 ... 93	0	0	num	
469	Resource allocation	599 - H216	2319	RW	Relay OUT16	WORD	Y	-93 ... 93	0	0	num	
470	Resource allocation	600 - H217	2320	RW	Relay OUT17	WORD	Y	-93 ... 93	0	0	num	
471	Resource allocation	601 - H218	2321	RW	Relay OUT18	WORD	Y	-93 ... 93	0	0	num	
472	Resource allocation	602 - H219	2322	RW	Relay OUT19	WORD	Y	-93 ... 93	0	0	num	
473	Resource allocation	603 - H101	2323	RW	HV DIH1 digital IN	WORD	Y	-53 ... 53	39	0	num	
474	Resource allocation	604 - H102	2324	RW	HV DIH2 digital IN	WORD	Y	-53 ... 53	40	0	num	
475	Resource allocation	605 - H103	2325	RW	HV DIH3 digital IN	WORD	Y	-53 ... 53	41	0	num	
476	Resource allocation	606 - H104	2326	RW	HV DIH4 digital IN	WORD	Y	-53 ... 53	42	0	num	
477	Resource allocation	607 - H105	2327	RW	HV DIH5 digital IN	WORD	Y	-53 ... 53	38	0	num	
478	Resource allocation	608 - H106	2328	RW	HV DIH6 digital IN	WORD	Y	-53 ... 53	0	0	num	

INDEX	FOLDER	LABEL	ADDRESS	R/W	DESCRIPTION	DATA SIZE	CPL	RANGE	DEFAULT	EXP	M.U.	Notes
479	Resource allocation	609 - H107	2329	RW	HV DIH7 digital IN	WORD	Y	-53 ... 53	0	0	num	
480	Resource allocation	610 - H108	2330	RW	HV DIH8 digital IN	WORD	Y	-53 ... 53	0	0	num	
481	Resource allocation	611 - H109	2331	RW	HV DIH9 digital IN	WORD	Y	-53 ... 53	0	0	num	
482	Resource allocation	612 - H110	2332	RW	HV DIH10 digital IN	WORD	Y	-53 ... 53	0	0	num	
483	Resource allocation	613 - H111	2333	RW	HV DIH11 digital IN	WORD	Y	-53 ... 53	0	0	num	
484	Resource allocation	614 - H112	2334	RW	HV DIH12 digital IN	WORD	Y	-53 ... 53	0	0	num	
485	Resource allocation	615 - H113	2335	RW	HV DIH13 digital IN	WORD	Y	-53 ... 53	27	0	num	
486	Resource allocation	616 - H114	2336	RW	HV DIH14 digital IN	WORD	Y	-53 ... 53	29	0	num	
487	Resource allocation	617 - H301	2337	RW	LV DI1 digital IN	WORD	Y	-53 ... 53	0	0	num	
488	Resource allocation	618 - H302	2338	RW	LV DI2 digital IN	WORD	Y	-53 ... 53	0	0	num	
489	Resource allocation	619 - H303	2339	RW	LV DI3 digital IN	WORD	Y	-53 ... 53	0	0	num	
490	Resource allocation	620 - H304	2340	RW	LV DI4 digital IN	WORD	Y	-53 ... 53	10	0	num	
491	Resource allocation	621 - H305	2341	RW	LV DI5 digital IN	WORD	Y	-53 ... 53	8	0	num	
492	Resource allocation	622 - H306	2342	RW	LV DI6 digital IN	WORD	Y	-53 ... 53	6	0	num	
493	Resource allocation	623 - H401	2343	RW	SIG1 analogue IN	WORD	Y	0 ... 3	1	0	num	
494	Resource allocation	624 - H402	2344	RW	SIG2 analogue IN	WORD	Y	0 ... 3	0	0	num	
495	Resource allocation	625 - H403	2345	RW	SIG3 analogue IN	WORD	Y	-56 ... 56	3	0	num	
497	Resource allocation	627 - H405	2347	RW	PB1 analogue IN	WORD	Y	-60 ... 60	5	0	num	
498	Resource allocation	628 - H406	2348	RW	PB2 analogue IN	WORD	Y	-60 ... 60	6	0	num	
499	Resource allocation	629 - H407	2349	RW	PB3 analogue IN	WORD	Y	-60 ... 60	0	0	num	
500	Resource allocation	630 - H408	2350	RW	PB4 analogue IN	WORD	Y	-60 ... 60	4	0	num	
501	Resource allocation	631 - H501	2351	RW	V1/I1 analogue OUT	WORD	Y	0 ... 3	1	0	num	
502	Resource allocation	632 - H502	2352	RW	V2/I2 analogue OUT	WORD	Y	0 ... 3	0	0	num	
503	Resource allocation	633 - H503	2353	RW	V3/I3 analogue OUT	WORD	Y	0 ... 3	0	0	num	
957	Compressors	551 - Stty	4096	RW	Central setpoint	WORD	Y	0 ... 1	1	0	flag	
504	Compressors	552 - PoLI	4097	RW	Activation policy	WORD	Y	0 ... 3	2	0	num	
505	Compressors	553 - SEr	4098	RW	COMP time limit	WORD	Y	0 ... 32000	32000	0	ore	
506	Compressors	101 - CCFn	4099	RW	COMP control type	WORD	Y	0 ... 2	0	0	num	
958	Compressors	102 - ItEn	4100	RW	Full control	WORD	Y	0 ... 1	0	0	flag	
507	Compressors	103 - It	4101	RW	Full time	WORD	Y	1 ... 900	600	-1	sec	
959	Compressors	104 - PbEn	4102	RW	Proportional control	WORD	Y	0 ... 1	0	0	flag	
960	Compressors	105 - dtEn	4103	RW	Derivative control	WORD	Y	0 ... 1	0	0	flag	
508	Compressors	106 - dt	4104	RW	Derivative time	WORD	Y	1 ... 900	600	-1	sec	
509	Compressors	107 - dSS	4105	RW	Dyn. Suc. set. mode	WORD	Y	0 ... 1	1	0	num	
961	Compressors	108 - CPP	4106	RW	Enable ERR-control	WORD	Y	0 ... 1	0	0	flag	
510	Compressors	109 - PoPr	4107	RW	ERR power value	WORD	Y	0 ... 100	50	0	%	
512	Compressors	111 - PEn	4109	RW	Max alarm LPr times	WORD	Y	0 ... 33	3	0	num	

INDEX	FOLDER	LABEL	ADDRESS	R/W	DESCRIPTION	DATA SIZE	CPL	RANGE	DEFAULT	EXP	M.U.	Notes
513	Compressors	112 - PEI	4110	RW	Pen interval	WORD	Y	1 ... 15	15	0	min	
514	Compressors	113 - byPS	4111	RW	HPr-LPr bypass time	WORD	Y	0 ... 999	2	0	min	
515	Compressors	114 - InLSP	4112	RW	Minimum speed	WORD	Y	0 ... 100	20	0	%	
516	Compressors	115 - InMSP	4113	RW	Maximum speed	WORD	Y	0 ... 100	80	0	%	
517	Compressors	116 - InSSP	4114	RW	Saturation speed	WORD	Y	0 ... 100	90	0	%	
962	Compressors	117 - CoIE	4115	RW	Enable free INV	WORD	Y	0 ... 1	1	0	flag	
518	Compressors	118 - PtSE	4116	RW	Part. sequence	WORD	Y	0 ... 2	0	0	num	
520	Compressors	120 - nCPC	4118	RW	Select Master COMP	WORD	Y	0...[523 - CpnU]	0	0	num	
521	Compressors	121 - oFon	4119	RW	COMP OFF - ON time	WORD	Y	0 ... 999	5	0	min	
522	Compressors	122 - donF	4120	RW	COMP ON - OFF time	WORD	Y	0 ... 999	15	0	sec	
523	Compressors	123 - onon	4121	RW	COMP ON - ON time	WORD	Y	0 ... 999	5	0	min	
524	Compressors	124 - don	4122	RW	ON steps time	WORD	Y	0 ... 999	15	0	sec	
525	Compressors	125 - doF	4123	RW	OFF steps time	WORD	Y	0 ... 999	5	0	sec	
963	Compressors	126 - FdLy	4124	RW	Enable dOn 1' Ins.	WORD	Y	0 ... 1	1	0	flag	
964	Compressors	127 - FdLF	4125	RW	Enable dOF 1' Dis.	WORD	Y	0 ... 1	1	0	flag	
526	Compressors	128 - InPC	4126	RW	% inv. variation	WORD	Y	1 ... 100	10	0	%	
527	Compressors	129 - Inot	4127	RW	Max time INV at 0%	WORD	Y	0 ... 999	999	0	min	
528	Compressors	130 - InLt	4128	RW	Time INV at min. sp.	WORD	Y	0 ... 999	0	0	sec	
529	Compressors	131 - LSE	4129	RW	Minimum setpoint	WORD	Y	-1000 ... 6000	-550	-1	°C	
530	Compressors	132 - HSE	4130	RW	Maximum setpoint	WORD	Y	-1000 ... 6000	0	-1	°C	
531	Compressors	133 - SEt	4131	RW	Suction setpoint	WORD	Y	131 -LSE...132-HSE	-350	-1	°C	
532	Compressors	134 - Pbd	4132	RW	Proportional band	WORD	Y	-1000 ... 6000	50	-1	°C	
533	Compressors	135 - PbdE	4133	RW	Extended prop. band	WORD	Y	-1000 ... 6000	100	-1	°C	
534	Compressors	136 - dSPo1	4134	RW	Offset 1 for dyn set	WORD	Y	-1000 ... 6000	20	-1	°C	
535	Compressors	137 - dSPo2	4135	RW	Offset 2 for dyn set	WORD	Y	-1000 ... 6000	20	-1	°C	
536	Compressors	138 - dLAL	4136	RW	LAL delta	WORD	Y	-1000 ... 6000	20	-1	°C	
537	Compressors	139 - LAL	4137	RW	Low alarm	WORD	Y	-1000 ... 6000	50	-1	°C	
538	Compressors	140 - dHAL	4138	RW	HAL delta	WORD	Y	-1000 ... 6000	20	-1	°C	
539	Compressors	141 - HAL	4139	RW	High alarm	WORD	Y	-1000 ... 6000	50	-1	°C	
540	Compressors	142 - Cod1	4140	RW	Delta 1 cut-off	WORD	Y	-1000 ... 6000	20	-1	°C	
541	Compressors	143 - Cod2	4141	RW	Delta 2 cut-off	WORD	Y	-1000 ... 6000	0	-1	°C	
542	Compressors	144 - InLPt	4142	RW	INV min power limit	WORD	Y	-1000 ... 6000	-370	-1	°C	
543	Compressors	145 - AtdS	4143	RW	Amb temp dynamic set	WORD	Y	-1000 ... 6000	150	-1	°C	
544	Compressors	146 - dAtdS	4144	RW	AtdS differential	WORD	Y	-1000 ... 6000	20	-1	°C	
545	Compressors	131 - LSE	4145	RW	Minimum setpoint	WORD	Y	-1500 ... 9999	-670	-1	°F	
546	Compressors	132 - HSE	4146	RW	Maximum setpoint	WORD	Y	-1500 ... 9999	320	-1	°F	
547	Compressors	133 - SEt	4147	RW	Suction setpoint	WORD	Y	131 -LSE...132-HSE	-310	-1	°F	

INDEX	FOLDER	LABEL	ADDRESS	R/W	DESCRIPTION	DATA SIZE	CPL	RANGE	DEFAULT	EXP	M.U.	Notes
548	Compressors	134 - Pbd	4148	RW	Proportional band	WORD	Y	-1500 ... 9999	90	-1	°F	
549	Compressors	135 - PbdE	4149	RW	Extended prop. band	WORD	Y	-1500 ... 9999	180	-1	°F	
550	Compressors	136 - dSPo1	4150	RW	Offset 1 for dyn set	WORD	Y	-1500 ... 9999	36	-1	°F	
551	Compressors	137 - dSPo2	4151	RW	Offset 2 for dyn set	WORD	Y	-1500 ... 9999	36	-1	°F	
552	Compressors	138 - dLAL	4152	RW	LAL delta	WORD	Y	-1500 ... 9999	36	-1	°F	
553	Compressors	139 - LAL	4153	RW	Low alarm	WORD	Y	-1500 ... 9999	410	-1	°F	
554	Compressors	140 - dHAL	4154	RW	HAL delta	WORD	Y	-1500 ... 9999	36	-1	°F	
555	Compressors	141 - HAL	4155	RW	High alarm	WORD	Y	-1500 ... 9999	410	-1	°F	
556	Compressors	142 - Cod1	4156	RW	Delta 1 cut-off	WORD	Y	-1500 ... 9999	36	-1	°F	
557	Compressors	143 - Cod2	4157	RW	Delta 2 cut-off	WORD	Y	-1500 ... 9999	0	-1	°F	
558	Compressors	144 - InLPt	4158	RW	INV min power limit	WORD	Y	-1500 ... 9999	-346	-1	°F	
559	Compressors	145 - AtdS	4159	RW	Amb temp dynamic set	WORD	Y	-1500 ... 9999	590	-1	°F	
560	Compressors	146 - dAtdS	4160	RW	AtdS differential	WORD	Y	-1500 ... 9999	36	-1	°F	
561	Compressors	131 - LSE	4161	RW	Minimum setpoint	WORD	Y	-100 ... 6800	37	-2	bar	
562	Compressors	132 - HSE	4162	RW	Maximum setpoint	WORD	Y	-100 ... 6800	460	-2	bar	
563	Compressors	133 - SEt	4163	RW	Suction setpoint	WORD	Y	131 -LSE...132-HSE	109	-2	bar	
564	Compressors	134 - Pbd	4164	RW	Proportional band	WORD	Y	-100 ... 6800	25	-2	bar	
565	Compressors	135 - PbdE	4165	RW	Extended prop. band	WORD	Y	-100 ... 6800	51	-2	bar	
566	Compressors	136 - dSPo1	4166	RW	Offset 1 for dyn set	WORD	Y	-100 ... 6800	10	-2	bar	
567	Compressors	137 - dSPo2	4167	RW	Offset 2 for dyn set	WORD	Y	-100 ... 6800	10	-2	bar	
568	Compressors	138 - dLAL	4168	RW	LAL delta	WORD	Y	-100 ... 6800	10	-2	bar	
569	Compressors	139 - LAL	4169	RW	Low alarm	WORD	Y	-100 ... 6800	547	-2	bar	
570	Compressors	140 - dHAL	4170	RW	HAL delta	WORD	Y	-100 ... 6800	10	-2	bar	
571	Compressors	141 - HAL	4171	RW	High alarm	WORD	Y	-100 ... 6800	247	-2	bar	
572	Compressors	142 - Cod1	4172	RW	Delta 1 cut-off	WORD	Y	-100 ... 6800	10	-2	bar	
573	Compressors	143 - Cod2	4173	RW	Delta 2 cut-off	WORD	Y	-100 ... 6800	0	-2	bar	
574	Compressors	144 - InLPt	4174	RW	INV min power limit	WORD	Y	-100 ... 6800	99	-2	bar	
577	Compressors	131 - LSE	4177	RW	Minimum setpoint	WORD	Y	-145 ... 9999	53	-1	Psi	
578	Compressors	132 - HSE	4178	RW	Maximum setpoint	WORD	Y	-145 ... 9999	667	-1	Psi	
579	Compressors	133 - SEt	4179	RW	Suction setpoint	WORD	Y	131 -LSE...132-HSE	158	-1	Psi	
580	Compressors	134 - Pbd	4180	RW	Proportional band	WORD	Y	-145 ... 9999	36	-1	Psi	
581	Compressors	135 - PbdE	4181	RW	Extended prop. band	WORD	Y	-145 ... 9999	73	-1	Psi	
582	Compressors	136 - dSPo1	4182	RW	Offset 1 for dyn set	WORD	Y	-145 ... 9999	14	-1	Psi	
583	Compressors	137 - dSPo2	4183	RW	Offset 2 for dyn set	WORD	Y	-145 ... 9999	14	-1	Psi	
584	Compressors	138 - dLAL	4184	RW	LAL delta	WORD	Y	-145 ... 9999	14	-1	Psi	
585	Compressors	139 - LAL	4185	RW	Low alarm	WORD	Y	-145 ... 9999	793	-1	Psi	
586	Compressors	140 - dHAL	4186	RW	HAL delta	WORD	Y	-145 ... 9999	14	-1	Psi	

INDEX	FOLDER	LABEL	ADDRESS	R/W	DESCRIPTION	DATA SIZE	CPL	RANGE	DEFAULT	EXP	M.U.	Notes
587	Compressors	141 - HAL	4187	RW	High alarm	WORD	Y	-145 ... 9999	793	-1	Psi	
588	Compressors	142 - Cod1	4188	RW	Delta 1 cut-off	WORD	Y	-145 ... 9999	14	-1	Psi	
589	Compressors	143 - Cod2	4189	RW	Delta 2 cut-off	WORD	Y	-145 ... 9999	0	-1	Psi	
590	Compressors	144 - InLPt	4190	RW	INV min power limit	WORD	Y	-145 ... 9999	143	-1	Psi	
593	Compressors [2]	201 - CCFn	4193	RW	COMP control type	WORD	Y	0 ... 2	0	0	num	
965	Compressors [2]	202 - ItEn	4194	RW	Full control	WORD	Y	0 ... 1	0	0	flag	
594	Compressors [2]	203 - It	4195	RW	Full time	WORD	Y	1 ... 900	600	-1	sec	
966	Compressors [2]	204 - PbEn	4196	RW	Proportional control	WORD	Y	0 ... 1	0	0	flag	
967	Compressors [2]	205 - dtEn	4197	RW	Derivative control	WORD	Y	0 ... 1	0	0	flag	
595	Compressors [2]	206 - dt	4198	RW	Derivative time	WORD	Y	1 ... 900	600	-1	sec	
596	Compressors [2]	207 - dSS	4199	RW	Dyn. Suc. set. mode	WORD	Y	0 ... 1	1	0	num	
968	Compressors [2]	208 - CPP	4200	RW	Enable ERR-control	WORD	Y	0 ... 1	0	0	flag	
597	Compressors [2]	209 - PoPr	4201	RW	ERR power value	WORD	Y	0 ... 100	50	0	%	
599	Compressors [2]	211 - PEn	4203	RW	Max alarm LPr times	WORD	Y	0 ... 33	3	0	num	
600	Compressors [2]	212 - PEI	4204	RW	Pen interval	WORD	Y	1 ... 15	15	0	min	
601	Compressors [2]	213 - byPS	4205	RW	HPr-LPr bypass time	WORD	Y	0 ... 999	2	0	min	
602	Compressors [2]	214 - InLSP	4206	RW	Minimum speed	WORD	Y	0 ... 100	20	0	%	
603	Compressors [2]	215 - InMSP	4207	RW	Maximum speed	WORD	Y	0 ... 100	80	0	%	
604	Compressors [2]	216 - InSSP	4208	RW	Saturation speed	WORD	Y	0 ... 100	90	0	%	
1	Compressors [2]	217 - CoIE	4209	RW	Enable free INV	WORD	Y	0 ... 1	1	0	flag	
605	Compressors [2]	218 - PtSE	4210	RW	Part. sequence	WORD	Y	0 ... 2	0	0	num	
607	Compressors [2]	220 - nCPC	4212	RW	Select Master COMP	WORD	Y	0...[522 - CpnU2]	0	0	num	
608	Compressors [2]	221 - oFon	4213	RW	COMP OFF - ON time	WORD	Y	0 ... 999	5	0	min	
609	Compressors [2]	222 - donF	4214	RW	COMP ON - OFF time	WORD	Y	0 ... 999	15	0	sec	
610	Compressors [2]	223 - onon	4215	RW	COMP ON - ON time	WORD	Y	0 ... 999	5	0	min	
611	Compressors [2]	224 - don	4216	RW	ON steps time	WORD	Y	0 ... 999	15	0	sec	
612	Compressors [2]	225 - doF	4217	RW	OFF steps time	WORD	Y	0 ... 999	50	0	sec	
970	Compressors [2]	226 - FdLy	4218	RW	Enable dOn 1' Ins.	WORD	Y	0 ... 1	1	0	flag	
971	Compressors [2]	227 - FdLF	4219	RW	Enable dOF 1' Dis.	WORD	Y	0 ... 1	1	0	flag	
613	Compressors [2]	228 - InPC	4220	RW	% inv. variation	WORD	Y	1 ... 100	10	0	%	
614	Compressors [2]	229 - Inot	4221	RW	Max time INV at 0%	WORD	Y	0 ... 999	999	0	min	
615	Compressors [2]	230 - InLt	4222	RW	Time INV at min. sp.	WORD	Y	0 ... 999	0	0	sec	
616	Compressors [2]	231 - LSE	4223	RW	Minimum setpoint	WORD	Y	-1000 ... 6000	-550	-1	°C	
617	Compressors [2]	232 - HSE	4224	RW	Maximum setpoint	WORD	Y	-1000 ... 6000	0	-1	°C	
618	Compressors [2]	233 - SEt	4225	RW	Suction setpoint	WORD	Y	231 -LSE...232-HSE	-80	-1	°C	
619	Compressors [2]	234 - Pbd	4226	RW	Proportional band	WORD	Y	-1000 ... 6000	50	-1	°C	
620	Compressors [2]	235 - PbdE	4227	RW	Extended prop. band	WORD	Y	-1000 ... 6000	100	-1	°C	

INDEX	FOLDER	LABEL	ADDRESS	R/W	DESCRIPTION	DATA SIZE	CPL	RANGE	DEFAULT	EXP	M.U.	Notes
621	Compressors [2]	236 - dSPo1	4228	RW	Offset 1 for dyn set	WORD	Y	-1000 ... 6000	20	-1	°C	
622	Compressors [2]	237 - dSPo2	4229	RW	Offset 2 for dyn set	WORD	Y	-1000 ... 6000	20	-1	°C	
623	Compressors [2]	238 - dLAL	4230	RW	LAL delta	WORD	Y	-1000 ... 6000	20	-1	°C	
624	Compressors [2]	239 - LAL	4231	RW	Low alarm	WORD	Y	-1000 ... 6000	50	-1	°C	
625	Compressors [2]	240 - dHAL	4232	RW	HAL delta	WORD	Y	-1000 ... 6000	20	-1	°C	
626	Compressors [2]	241 - HAL	4233	RW	High alarm	WORD	Y	-1000 ... 6000	50	-1	°C	
627	Compressors [2]	242 - Cod1	4234	RW	Delta 1 cut-off	WORD	Y	-1000 ... 6000	20	-1	°C	
628	Compressors [2]	243 - Cod2	4235	RW	Delta 2 cut-off	WORD	Y	-1000 ... 6000	0	-1	°C	
629	Compressors [2]	244 - InLPt	4236	RW	INV min power limit	WORD	Y	-1000 ... 6000	-100	-1	°C	
630	Compressors [2]	245 - AtdS	4237	RW	Amb temp dynamic set	WORD	Y	-1000 ... 6000	150	-1	°C	
631	Compressors [2]	246 - dAtdS	4238	RW	AtdS differential	WORD	Y	-1000 ... 6000	20	-1	°C	
632	Compressors [2]	231 - LSE	4239	RW	Minimum setpoint	WORD	Y	-1500 ... 9999	-670	-1	°F	
633	Compressors [2]	232 - HSE	4240	RW	Maximum setpoint	WORD	Y	-1500 ... 9999	320	-1	°F	
634	Compressors [2]	233 - SEt	4241	RW	Suction setpoint	WORD	Y	231 -LSE...232-HSE	176	-1	°F	
635	Compressors [2]	234 - Pbd	4242	RW	Proportional band	WORD	Y	-1500 ... 9999	90	-1	°F	
636	Compressors [2]	235 - PbdE	4243	RW	Extended prop. band	WORD	Y	-1500 ... 9999	180	-1	°F	
637	Compressors [2]	236 - dSPo1	4244	RW	Offset 1 for dyn set	WORD	Y	-1500 ... 9999	36	-1	°F	
638	Compressors [2]	237 - dSPo2	4245	RW	Offset 2 for dyn set	WORD	Y	-1500 ... 9999	36	-1	°F	
639	Compressors [2]	238 - dLAL	4246	RW	LAL delta	WORD	Y	-1500 ... 9999	36	-1	°F	
640	Compressors [2]	239 - LAL	4247	RW	Low alarm	WORD	Y	-1500 ... 9999	410	-1	°F	
641	Compressors [2]	240 - dHAL	4248	RW	HAL delta	WORD	Y	-1500 ... 9999	36	-1	°F	
642	Compressors [2]	241 - HAL	4249	RW	High alarm	WORD	Y	-1500 ... 9999	410	-1	°F	
643	Compressors [2]	242 - Cod1	4250	RW	Delta 1 cut-off	WORD	Y	-1500 ... 9999	36	-1	°F	
644	Compressors [2]	243 - Cod2	4251	RW	Delta 2 cut-off	WORD	Y	-1500 ... 9999	0	-1	°F	
645	Compressors [2]	244 - InLPt	4252	RW	INV min power limit	WORD	Y	-1500 ... 9999	14	-1	°F	
646	Compressors [2]	245 - AtdS	4253	RW	Amb temp dynamic set	WORD	Y	-1500 ... 9999	590	-1	°F	
647	Compressors [2]	246 - dAtdS	4254	RW	AtdS differential	WORD	Y	-1500 ... 9999	36	-1	°F	
648	Compressors [2]	231 - LSE	4255	RW	Minimum setpoint	WORD	Y	-100 ... 6800	37	-2	bar	
649	Compressors [2]	232 - HSE	4256	RW	Maximum setpoint	WORD	Y	-100 ... 6800	460	-2	bar	
650	Compressors [2]	233 - SEt	4257	RW	Suction setpoint	WORD	Y	231 -LSE...232-HSE	344	-2	bar	
651	Compressors [2]	234 - Pbd	4258	RW	Proportional band	WORD	Y	-100 ... 6800	70	-2	bar	
652	Compressors [2]	235 - PbdE	4259	RW	Extended prop. band	WORD	Y	-100 ... 6800	141	-2	bar	
653	Compressors [2]	236 - dSPo1	4260	RW	Offset 1 for dyn set	WORD	Y	-100 ... 6800	28	-2	bar	
654	Compressors [2]	237 - dSPo2	4261	RW	Offset 2 for dyn set	WORD	Y	-100 ... 6800	28	-2	bar	
655	Compressors [2]	238 - dLAL	4262	RW	LAL delta	WORD	Y	-100 ... 6800	28	-2	bar	
656	Compressors [2]	239 - LAL	4263	RW	Low alarm	WORD	Y	-100 ... 6800	547	-2	bar	
657	Compressors [2]	240 - dHAL	4264	RW	HAL delta	WORD	Y	-100 ... 6800	28	-2	bar	

INDEX	FOLDER	LABEL	ADDRESS	R/W	DESCRIPTION	DATA SIZE	CPL	RANGE	DEFAULT	EXP	M.U.	Notes
658	Compressors [2]	241 - HAL	4265	RW	High alarm	WORD	Y	-100 ... 6800	547	-2	bar	
659	Compressors [2]	242 - Cod1	4266	RW	Delta 1 cut-off	WORD	Y	-100 ... 6800	28	-2	bar	
660	Compressors [2]	243 - Cod2	4267	RW	Delta 2 cut-off	WORD	Y	-100 ... 6800	0	-2	bar	
661	Compressors [2]	244 - InLPt	4268	RW	INV min power limit	WORD	Y	-100 ... 6800	319	-2	bar	
664	Compressors [2]	231 - LSE	4271	RW	Minimum setpoint	WORD	Y	-145 ... 9999	53	-1	Psi	
665	Compressors [2]	232 - HSE	4272	RW	Maximum setpoint	WORD	Y	-145 ... 9999	667	-1	Psi	
666	Compressors [2]	233 - SET	4273	RW	Suction setpoint	WORD	Y	231 -LSE...232-HSE	498	-1	Psi	
667	Compressors [2]	234 - Pbd	4274	RW	Proportional band	WORD	Y	-145 ... 9999	101	-1	Psi	
668	Compressors [2]	235 - PbdE	4275	RW	Extended prop. band	WORD	Y	-145 ... 9999	204	-1	Psi	
669	Compressors [2]	236 - dSPo1	4276	RW	Offset 1 for dyn set	WORD	Y	-145 ... 9999	40	-1	Psi	
670	Compressors [2]	237 - dSPo2	4277	RW	Offset 2 for dyn set	WORD	Y	-145 ... 9999	40	-1	Psi	
671	Compressors [2]	238 - dLAL	4278	RW	LAL delta	WORD	Y	-145 ... 9999	40	-1	Psi	
672	Compressors [2]	239 - LAL	4279	RW	Low alarm	WORD	Y	-145 ... 9999	793	-1	Psi	
673	Compressors [2]	240 - dHAL	4280	RW	HAL delta	WORD	Y	-145 ... 9999	40	-1	Psi	
674	Compressors [2]	241 - HAL	4281	RW	High alarm	WORD	Y	-145 ... 9999	793	-1	Psi	
675	Compressors [2]	242 - Cod1	4282	RW	Delta 1 cut-off	WORD	Y	-145 ... 9999	40	-1	Psi	
676	Compressors [2]	243 - Cod2	4283	RW	Delta 2 cut-off	WORD	Y	-145 ... 9999	0	-1	Psi	
677	Compressors [2]	244 - InLPt	4284	RW	INV min power limit	WORD	Y	-145 ... 9999	462	-1	Psi	
680	Ventilators	301 - FCFn	4352	RW	Type of FAN control	WORD	Y	0 ... 2	0	0	num	
972	Ventilators	302 - FACt	4353	RW	Activation mode	WORD	Y	0 ... 1	0	0	flag	
973	Ventilators	303 - CoIE	4354	RW	Enable free INV	WORD	Y	0 ... 1	0	0	flag	
974	Ventilators	304 - ItEn	4355	RW	Full control	WORD	Y	0 ... 1	0	0	flag	
681	Ventilators	305 - It	4356	RW	Full time	WORD	Y	1 ... 900	600	-1	sec	
975	Ventilators	306 - PbEn	4357	RW	Proportional control	WORD	Y	0 ... 1	0	0	flag	
976	Ventilators	307 - dtEn	4358	RW	Derivative control	WORD	Y	0 ... 1	0	0	flag	
682	Ventilators	308 - dt	4359	RW	Derivative time	WORD	Y	1 ... 900	600	-1	sec	
683	Ventilators	309 - InLSP	4360	RW	Minimum speed	WORD	Y	0 ... 100	20	0	%	
684	Ventilators	310 - InMSP	4361	RW	Maximum speed	WORD	Y	0 ... 100	80	0	%	
685	Ventilators	311 - InSSP	4362	RW	Saturation speed	WORD	Y	0 ... 100	90	0	%	
977	Ventilators	312 - FPP	4363	RW	Enable ERR-control	WORD	Y	0 ... 1	0	0	flag	
686	Ventilators	313 - FPr	4364	RW	ERR power value	WORD	Y	0 ... 100	50	0	%	
687	Ventilators	314 - dSd	4365	RW	Dyn. Del. Set. mode.	WORD	Y	0 ... 1	1	0	num	
688	Ventilators	315 - PEn	4366	RW	Max alarm LPr times	WORD	Y	0 ... 33	3	0	num	
689	Ventilators	316 - PEI	4367	RW	Pen interval	WORD	Y	1 ... 15	15	0	min	
690	Ventilators	317 - byPS	4368	RW	HPr-LPr bypass time	WORD	Y	0 ... 999	2	0	sec	
978	Ventilators	318 - HPPE	4369	RW	Enable HP prev.	WORD	Y	0 ... 1	0	0	flag	
691	Ventilators	319 - HPPP	4370	RW	Red. Pow. HP Prev.	WORD	Y	1 ... 100	30	0	%	

INDEX	FOLDER	LABEL	ADDRESS	R/W	DESCRIPTION	DATA SIZE	CPL	RANGE	DEFAULT	EXP	M.U.	Notes
692	Ventilators	320 - HPPd	4371	RW	HP Prev.Max.Duration	WORD	Y	0 ... 999	15	0	min	
693	Ventilators	321 - HPPI	4372	RW	HP Prev. Interval	WORD	Y	0 ... 999	10	0	ore	
979	Ventilators	322 - rot	4373	RW	Activation policy	WORD	Y	0 ... 1	0	0	flag	
694	Ventilators	323 - Clt	4374	RW	Pick-up time	WORD	Y	0 ... 120	30	0	sec	
695	Ventilators	324 - don	4375	RW	ON steps time	WORD	Y	0 ... 999	15	0	sec	
696	Ventilators	325 - doF	4376	RW	OFF steps time	WORD	Y	0 ... 999	5	0	sec	
697	Ventilators	326 - FSSt	4377	RW	Max OFF time	WORD	Y	0 ... 999	24	0	ore	
698	Ventilators	327 - SEr	4378	RW	FAN time limit	WORD	Y	0 ... 32000	32000	0	ore	
699	Ventilators	328 - Inot	4379	RW	Max time INV at 0%	WORD	Y	0 ... 999	15	0	min	
700	Ventilators	329 - InPC	4380	RW	% inv. variation	WORD	Y	1 ... 100	20	0	%	
701	Ventilators	330 - InoS	4381	RW	INV 0% activat. mode	WORD	Y	0 ... 1	1	0	num	
702	Ventilators	331 - LSE	4382	RW	Minimum setpoint	WORD	Y	-1000 ... 6000	0	-1	°C	
703	Ventilators	332 - HSE	4383	RW	Maximum setpoint	WORD	Y	-1000 ... 6000	450	-1	°C	
704	Ventilators	333 - SEt	4384	RW	Delivery setpoint	WORD	Y	331 -LSE...332-HSE	350	-1	°C	
705	Ventilators	334 - Pbd	4385	RW	Proportional band	WORD	Y	-1000 ... 6000	80	-1	°C	
706	Ventilators	335 - Cod1	4386	RW	Delta 1 cut-off	WORD	Y	-1000 ... 6000	10	-1	°C	
707	Ventilators	336 - Cod2	4387	RW	Delta 2 cut-off	WORD	Y	-1000 ... 6000	10	-1	°C	
708	Ventilators	337 - dHAL	4388	RW	HAL delta	WORD	Y	-1000 ... 6000	20	-1	°C	
709	Ventilators	338 - HAL	4389	RW	High alarm	WORD	Y	-1000 ... 6000	50	-1	°C	
710	Ventilators	339 - dSFo	4390	RW	Fixed offset dyn set	WORD	Y	-1000 ... 6000	20	-1	°C	
711	Ventilators	340 - HPP1	4391	RW	HP prev. limit 1	WORD	Y	-1000 ... 6000	30	-1	°C	
712	Ventilators	341 - HPP2	4392	RW	HP prev. limit 2	WORD	Y	-1000 ... 6000	40	-1	°C	
713	Ventilators	342 - HPPb	4393	RW	HP prev. alarm band	WORD	Y	-1000 ... 6000	10	-1	°C	
714	Ventilators	343 - dLAL	4394	RW	LAL delta	WORD	Y	-1000 ... 6000	20	-1	°C	
715	Ventilators	344 - LAL	4395	RW	Low alarm	WORD	Y	-1000 ... 6000	50	-1	°C	
716	Ventilators	345 - InLPt	4396	RW	INV min power limit	WORD	Y	-1000 ... 6000	340	-1	°C	
717	Ventilators	346 - dSdo	4397	RW	Dyn. Offset Dyn. Set	WORD	Y	-1000 ... 6000	50	-1	°C	
718	Ventilators	347 - dSLdo	4398	RW	Min Dyn.Offs.Dyn.Set	WORD	Y	-1000 ... 6000	30	-1	°C	
719	Ventilators	348 - dSMEt	4399	RW	MaxExtTemDynSet	WORD	Y	-1000 ... 6000	300	-1	°C	
720	Ventilators	349 - LdSP	4400	RW	Min. dynamic set	WORD	Y	-1000 ... 6000	300	-1	°C	
721	Ventilators	350 - SCt1	4401	RW	Minimum sub-cooling	WORD	Y	-1000 ... 6000	30	-1	°C	
722	Ventilators	351 - SCt2	4402	RW	Maximum sub-cooling	WORD	Y	-1000 ... 6000	60	-1	°C	
723	Ventilators	352 - SCd1	4403	RW	Sub-cooling delta1	WORD	Y	-1000 ... 6000	10	-1	°C	
724	Ventilators	353 - SCoF1	4404	RW	Sub-cooling offset1	WORD	Y	-1000 ... 6000	10	-1	°C	
725	Ventilators	354 - SCd2	4405	RW	Sub-cooling Delta2	WORD	Y	-1000 ... 6000	10	-1	°C	
726	Ventilators	355 - SCoF2	4406	RW	Sub-cooling Offset2	WORD	Y	-1000 ... 6000	10	-1	°C	
727	Ventilators	356 - EtPr	4407	RW	Safety ext temp	WORD	Y	-1000 ... 6000	0	-1	°C	

INDEX	FOLDER	LABEL	ADDRESS	R/W	DESCRIPTION	DATA SIZE	CPL	RANGE	DEFAULT	EXP	M.U.	Notes
728	Ventilators	331 - LSE	4408	RW	Minimum setpoint	WORD	Y	-1500 ... 9999	320	-1	°F	
729	Ventilators	332 - HSE	4409	RW	Maximum setpoint	WORD	Y	-1500 ... 9999	1130	-1	°F	
730	Ventilators	333 - SEt	4410	RW	Delivery setpoint	WORD	Y	331 -LSE...332-HSE	950	-1	°F	
731	Ventilators	334 - Pbd	4411	RW	Proportional band	WORD	Y	-1500 ... 9999	144	-1	°F	
732	Ventilators	335 - Cod1	4412	RW	Delta 1 cut-off	WORD	Y	-1500 ... 9999	18	-1	°F	
733	Ventilators	336 - Cod2	4413	RW	Delta 2 cut-off	WORD	Y	-1500 ... 9999	18	-1	°F	
734	Ventilators	337 - dHAL	4414	RW	HAL delta	WORD	Y	-1500 ... 9999	36	-1	°F	
735	Ventilators	338 - HAL	4415	RW	High alarm	WORD	Y	-1500 ... 9999	410	-1	°F	
736	Ventilators	339 - dSFo	4416	RW	Fixed offset dyn set	WORD	Y	-1500 ... 9999	36	-1	°F	
737	Ventilators	340 - HPP1	4417	RW	HP prev. limit 1	WORD	Y	-1500 ... 9999	374	-1	°F	
738	Ventilators	341 - HPP2	4418	RW	HP prev. limit 2	WORD	Y	-1500 ... 9999	392	-1	°F	
739	Ventilators	342 - HPPb	4419	RW	HP prev. alarm band	WORD	Y	-1500 ... 9999	18	-1	°F	
740	Ventilators	343 - dLAL	4420	RW	LAL delta	WORD	Y	-1500 ... 9999	36	-1	°F	
741	Ventilators	344 - LAL	4421	RW	Low alarm	WORD	Y	-1500 ... 9999	410	-1	°F	
742	Ventilators	345 - InLPt	4422	RW	INV min power limit	WORD	Y	-1500 ... 9999	932	-1	°F	
743	Ventilators	346 - dSdo	4423	RW	Dyn. Offset Dyn. Set	WORD	Y	-1500 ... 9999	90	-1	°F	
744	Ventilators	347 - dSLdo	4424	RW	Min Dyn.Offs.Dyn.Set	WORD	Y	-1500 ... 9999	54	-1	°F	
745	Ventilators	348 - dSMet	4425	RW	MaxExtTemDynSet	WORD	Y	-1500 ... 9999	860	-1	°F	
746	Ventilators	349 - LdSP	4426	RW	Min. dynamic set	WORD	Y	-1500 ... 9999	860	-1	°F	
747	Ventilators	350 - SCt1	4427	RW	Minimum sub-cooling	WORD	Y	-1500 ... 9999	54	-1	°F	
748	Ventilators	351 - SCt2	4428	RW	Maximum sub-cooling	WORD	Y	-1500 ... 9999	108	-1	°F	
749	Ventilators	352 - SCd1	4429	RW	Sub-cooling delta1	WORD	Y	-1500 ... 9999	18	-1	°F	
750	Ventilators	353 - SCoF1	4430	RW	Sub-cooling offset1	WORD	Y	-1500 ... 9999	18	-1	°F	
751	Ventilators	354 - SCd2	4431	RW	Sub-cooling Delta2	WORD	Y	-1500 ... 9999	18	-1	°F	
752	Ventilators	355 - SCoF2	4432	RW	Sub-cooling Offset2	WORD	Y	-1500 ... 9999	18	-1	°F	
753	Ventilators	356 - EtPr	4433	RW	Safety ext temp	WORD	Y	-1500 ... 9999	0	-1	°F	
754	Ventilators	331 - LSE	4434	RW	Minimum setpoint	WORD	Y	-10 ... 1000	560	-1	bar	
755	Ventilators	332 - HSE	4435	RW	Maximum setpoint	WORD	Y	-10 ... 1000	197	-1	bar	
756	Ventilators	333 - SEt	4436	RW	Delivery setpoint	WORD	Y	331 -LSE...332-HSE	154	-1	bar	
757	Ventilators	334 - Pbd	4437	RW	Proportional band	WORD	Y	-10 ... 1000	32	-1	bar	
758	Ventilators	335 - Cod1	4438	RW	Delta 1 cut-off	WORD	Y	-10 ... 1000	4	-1	bar	
759	Ventilators	336 - Cod2	4439	RW	Delta 2 cut-off	WORD	Y	-10 ... 1000	4	-1	bar	
760	Ventilators	337 - dHAL	4440	RW	HAL delta	WORD	Y	-10 ... 1000	8	-1	bar	
761	Ventilators	338 - HAL	4441	RW	High alarm	WORD	Y	-10 ... 1000	66	-1	bar	
762	Ventilators	339 - dSFo	4442	RW	Fixed offset dyn set	WORD	Y	-10 ... 1000	8	-1	bar	
763	Ventilators	340 - HPP1	4443	RW	HP prev. limit 1	WORD	Y	-10 ... 1000	62	-1	bar	
764	Ventilators	341 - HPP2	4444	RW	HP prev. limit 2	WORD	Y	-10 ... 1000	64	-1	bar	

INDEX	FOLDER	LABEL	ADDRESS	R/W	DESCRIPTION	DATA SIZE	CPL	RANGE	DEFAULT	EXP	M.U.	Notes
765	Ventilators	342 - HPPb	4445	RW	HP prev. alarm band	WORD	Y	-10 ... 1000	4	-1	bar	
766	Ventilators	343 - dLAL	4446	RW	LAL delta	WORD	Y	-10 ... 1000	8	-1	bar	
767	Ventilators	344 - LAL	4447	RW	Low alarm	WORD	Y	-10 ... 1000	66	-1	bar	
768	Ventilators	345 - InLPt	4448	RW	INV min power limit	WORD	Y	-10 ... 1000	150	-1	bar	
780	Ventilators	331 - LSE	4460	RW	Minimum setpoint	WORD	Y	-14 ... 1450	81	0	Psi	
781	Ventilators	332 - HSE	4461	RW	Maximum setpoint	WORD	Y	-14 ... 1450	285	0	Psi	
782	Ventilators	333 - SET	4462	RW	Delivery setpoint	WORD	Y	331 -LSE...332-HSE	223	0	Psi	
783	Ventilators	334 - Pbd	4463	RW	Proportional band	WORD	Y	-14 ... 1450	46	0	Psi	
784	Ventilators	335 - Cod1	4464	RW	Delta 1cut-off	WORD	Y	-14 ... 1450	5	0	Psi	
785	Ventilators	336 - Cod2	4465	RW	Delta 2 cut-off	WORD	Y	-14 ... 1450	5	0	Psi	
786	Ventilators	337 - dHAL	4466	RW	HAL delta	WORD	Y	-14 ... 1450	11	0	Psi	
787	Ventilators	338 - HAL	4467	RW	High alarm	WORD	Y	-14 ... 1450	95	0	Psi	
788	Ventilators	339 - dSFo	4468	RW	Fixed offset dyn set	WORD	Y	-14 ... 1450	11	0	Psi	
789	Ventilators	340 - HPP1	4469	RW	HP prev. limit 1	WORD	Y	-14 ... 1450	89	0	Psi	
790	Ventilators	341 - HPP2	4470	RW	HP prev. limit 2	WORD	Y	-14 ... 1450	92	0	Psi	
791	Ventilators	342 - HPPb	4471	RW	HP prev. alarm band	WORD	Y	-14 ... 1450	5	0	Psi	
792	Ventilators	343 - dLAL	4472	RW	LAL delta	WORD	Y	-14 ... 1450	11	0	Psi	
793	Ventilators	344 - LAL	4473	RW	Low alarm	WORD	Y	-14 ... 1450	95	0	Psi	
794	Ventilators	345 - InLPt	4474	RW	INV min power limit	WORD	Y	-14 ... 1450	217	0	Psi	

1.5.3 Client table

INDEX	FOLDER	LABEL	ADDRESS	R/W	DESCRIPTION	DATA SIZE	CPL	RANGE	DEFAULT	EXP	M.U.
1		SIG1	4709	R	Analogue input SIG1	WORD	Y	-32768 ... 32767	0	-2	bar
2		SIG1	4709	R	Analogue input SIG1	WORD	Y	-32768 ... 32767	0	-1	bar
3		SIG1	4709	R	Analogue input SIG1	WORD	Y	-32768 ... 32767	0	-1	°C
4		SIG1	4709	R	Analogue input SIG1	WORD	Y	0 ... 1	0		flag
5		SIG2	4710	R	Analogue input SIG2	WORD	Y	-32768 ... 32767	0	-2	bar
6		SIG2	4710	R	Analogue input SIG2	WORD	Y	-32768 ... 32767	0	-1	bar
7		SIG2	4710	R	Analogue input SIG2	WORD	Y	-32768 ... 32767	0	-1	°C
8		SIG2	4710	R	Analogue input SIG2	WORD	Y	0 ... 1	0		flag
9		SIG3	4711	R	Analogue input SIG3	WORD	Y	-32768 ... 32767	0	-1	bar
10		SIG3	4711	R	Analogue input SIG3	WORD	Y	-32768 ... 32767	0	-1	°C
11		SIG3	4711	R	Analogue input SIG3	WORD	Y	0 ... 1	0		flag
15		PB1	4713	R	Analogue input PB1	WORD	Y	-32768 ... 32767	0	-1	°C
16		PB1	4713	R	Analogue input PB1	WORD	Y	0 ... 1	0		flag
17		PB2	4714	R	Analogue input PB2	WORD	Y	-32768 ... 32767	0	-1	°C

INDEX	FOLDER	LABEL	ADDRESS	R/W	DESCRIPTION	DATA SIZE	CPL	RANGE	DEFAULT	EXP	M.U.
18		PB2	4714	R	Analogue input PB2	WORD	Y	0 ... 1	0		flag
19		PB3	4715	R	Analogue input PB3	WORD	Y	-32768 ... 32767	0	-1	°C
20		PB3	4715	R	Analogue input PB3	WORD	Y	0 ... 1	0		flag
21		PB4	4716	R	Analogue input PB4	WORD	Y	-32768 ... 32767	0	-1	°C
22		PB4	4716	R	Analogue input PB4	WORD	Y	0 ... 1	0		flag
23		SIG1	4709	R	Analogue input SIG1	WORD	Y	-32768 ... 32767	0	-1	Psi
24		SIG1	4709	R	Analogue input SIG1	WORD	Y	-32768 ... 32767	0	0	Psi
25		SIG1	4709	R	Analogue input SIG1	WORD	Y	-32768 ... 32767	0	-1	°F
26		SIG1	4709	R	Analogue input SIG1	WORD	Y	0 ... 1	0		flag
27		SIG2	4710	R	Analogue input SIG2	WORD	Y	-32768 ... 32767	0	-1	Psi
28		SIG2	4710	R	Analogue input SIG2	WORD	Y	-32768 ... 32767	0	0	Psi
29		SIG2	4710	R	Analogue input SIG2	WORD	Y	-32768 ... 32767	0	-1	°F
30		SIG2	4710	R	Analogue input SIG2	WORD	Y	0 ... 1	0		flag
31		SIG3	4711	R	Analogue input SIG3	WORD	Y	-32768 ... 32767	0	0	Psi
32		SIG3	4711	R	Analogue input SIG3	WORD	Y	-32768 ... 32767	0	-1	°F
33		SIG3	4711	R	Analogue input SIG3	WORD	Y	0 ... 1	0		flag
37		PB1	4713	R	Analogue input PB1	WORD	Y	-32768 ... 32767	0	-1	°F
38		PB1	4713	R	Analogue input PB1	WORD	Y	0 ... 1	0		flag
39		PB2	4714	R	Analogue input PB2	WORD	Y	-32768 ... 32767	0	-1	°F
40		PB2	4714	R	Analogue input PB2	WORD	Y	0 ... 1	0		flag
41		PB3	4715	R	Analogue input PB3	WORD	Y	-32768 ... 32767	0	-1	°F
42		PB3	4715	R	Analogue input PB3	WORD	Y	0 ... 1	0		flag
43		PB4	4716	R	Analogue input PB4	WORD	Y	-32768 ... 32767	0	-1	°F
44		PB4	4716	R	Analogue input PB4	WORD	Y	0 ... 1	0		flag
45		DI(L/H)1	33792	R	Digital input DI(L/H)1	1 bit		0 ... 1	0		flag
46		DI(L/H)2	33792,1	R	Digital input DI(L/H)2	1 bit		0 ... 1	0		flag
47		DI(L/H)3	33792,2	R	Digital input DI(L/H)3	1 bit		0 ... 1	0		flag
48		DI(L/H)4	33792,3	R	Digital input DI(L/H)4	1 bit		0 ... 1	0		flag
49		DI(L/H)5	33792,4	R	Digital input DI(L/H)5	1 bit		0 ... 1	0		flag
50		DI(L/H)6	33792,5	R	Digital input DI(L/H)6	1 bit		0 ... 1	0		flag
51		DI(L/H)7	33792,6	R	Digital input DI(L/H)7	1 bit		0 ... 1	0		flag
52		DI(L/H)8	33792,7	R	Digital input DI(L/H)8	1 bit		0 ... 1	0		flag
53		DI(L/H)9	33792,8	R	Digital input DI(L/H)9	1 bit		0 ... 1	0		flag
54		DI(L/H)10	33792,9	R	Digital input DI(L/H)10	1 bit		0 ... 1	0		flag

<i>INDEX</i>	<i>FOLDER</i>	<i>LABEL</i>	<i>ADDRESS</i>	<i>R/W</i>	<i>DESCRIPTION</i>	<i>DATA SIZE</i>	<i>CPL</i>	<i>RANGE</i>	<i>DEFAULT</i>	<i>EXP</i>	<i>M.U.</i>
55		DI(L/H)11	33792,10	R	Digital input DI(L/H)11	1 bit		0 ... 1	0		flag
56		DI(L/H)12	33792,11	R	Digital input DI(L/H)12	1 bit		0 ... 1	0		flag
57		DI(L/H)13	33792,12	R	Digital input DI(L/H)13	1 bit		0 ... 1	0		flag
58		DI(L/H)14	33792,13	R	Digital input DI(L/H)14	1 bit		0 ... 1	0		flag
59		DI(L/H)15	33792,14	R	Digital input DI(L/H)15	1 bit		0 ... 1	0		flag
60		DI(L/H)16	33792,15	R	Digital input DI(L/H)16	1 bit		0 ... 1	0		flag
61		DI(L/H)17	33793	R	Digital input DI(L/H)17	1 bit		0 ... 1	0		flag
62		DI(L/H)18	33793,1	R	Digital input DI(L/H)18	1 bit		0 ... 1	0		flag
63		DI(L/H)19	33793,2	R	Digital input DI(L/H)19	1 bit		0 ... 1	0		flag
64		DI(L/H)20	33793,3	R	Digital input DI(L/H)20	1 bit		0 ... 1	0		flag
65		V1/I1	35072	R	Analogue output 1	BYTE		0 ... 100	0		%
66		V2/I2	35072,8	R	Analogue output 2	BYTE		0 ... 100	0		%
67		V3/I3	35073	R	Analogue output 3	BYTE		0 ... 100	0		%
68		OUT1	34816	R	Digital output 1	1 bit		0 ... 1	0		flag
69		OUT2	34816,1	R	Digital output 2	1 bit		0 ... 1	0		flag
70		OUT3	34816,2	R	Digital output 3	1 bit		0 ... 1	0		flag
71		OUT4	34816,3	R	Digital output 4	1 bit		0 ... 1	0		flag
72		OUT5	34816,4	R	Digital output 5	1 bit		0 ... 1	0		flag
73		OUT6	34816,5	R	Digital output 6	1 bit		0 ... 1	0		flag
74		OUT7	34816,6	R	Digital output 7	1 bit		0 ... 1	0		flag
75		OUT8	34816,7	R	Digital output 8	1 bit		0 ... 1	0		flag
76		OUT9	34816,8	R	Digital output 9	1 bit		0 ... 1	0		flag
77		OUT10	34816,9	R	Digital output 10	1 bit		0 ... 1	0		flag
78		OUT11	34816,10	R	Digital output 11	1 bit		0 ... 1	0		flag
79		OUT12	34816,11	R	Digital output 12	1 bit		0 ... 1	0		flag
80		OUT13	34816,12	R	Digital output 13	1 bit		0 ... 1	0		flag
81		OUT14	34816,13	R	Digital output 14	1 bit		0 ... 1	0		flag

INDEX	FOLDER	LABEL	ADDRESS	R/W	DESCRIPTION	DATA SIZE	CPL	RANGE	DEFAULT	EXP	M.U.
82		OUT15	34816,14	R	Digital output 15	1 bit		0 ... 1	0		flag
83		OUT16	34816,15	R	Digital output 16	1 bit		0 ... 1	0		flag
84		OUT17	34817	R	Digital output 17	1 bit		0 ... 1	0		flag
85		OUT18	34817,1	R	Digital output 18	1 bit		0 ... 1	0		flag
86		OUT19	34817,2	R	Digital output 19	1 bit		0 ... 1	0		flag
109		MB_ABICONFIGCMD	305	R	Enable open configuration mode confirmed	WORD		0 ... 1	0		flag
110		MB_RQCONFIGCMD	306	R	Request open configuration mode	WORD		0 ... 1	0		flag
128		MB_PARMODIFIED_MBADDRESS	420	R	Last parameter modified Modbus <i>address</i>	WORD		0 ... 65535	0		num
129		MB_LOCK_PARMODIFIED_MBADDRESS	421	R	Stop automatic update of associated parameters	WORD		0 ... 1	0		flag
130		MB_REALTIMEDATA_SECOND	422	R	Seconds	WORD		0 ... 59	0		sec
131		MB_REALTIMEDATA_MINUTES	423	R	minutes	WORD		0 ... 59	0		min
132		MB_REALTIMEDATA_HOUR	424	R	hours	WORD		0 ... 23	0		ore
133		MB_REALTIMEDATA_DAYWEEK	425	R	Day of week	WORD		0 ... 6	0		giorno
134		MB_REALTIMEDATA_DAYMONTH	426	R	Day of month	WORD		1 ... 31	0		num
135		MB_REALTIMEDATA_MONTH	427	R	Month	WORD		1 ... 12	0		mese
136		MB_REALTIMEDATA_YEAR	428	R	Year	WORD		0 ... 99	0		anno
149		MB_TREG_DISPLAY_CONTROL	441	R	Unit of measure for suction read-out	WORD		0 ... 3	0		num
150		MB_FANS_DISPLAY_CONTROL	442	R	Unit of measure for delivery read-out	WORD		0 ... 3	0		num
151		MB_PROG_STATUS	443	R	Active programming mode	WORD		0 ... 1	0		flag
152		MB_KEYLOCK_STATUS	444	R	Lock keypad	WORD		0 ... 13	0		num
153		MB_USER_INFO	445	R	Application details	WORD		0 ... 65535	0		num

<i>INDEX</i>	<i>FOLDER</i>	<i>LABEL</i>	<i>ADDRESS</i>	<i>R/W</i>	<i>DESCRIPTION</i>	<i>DATA SIZE</i>	<i>CPL</i>	<i>RANGE</i>	<i>DEFAULT</i>	<i>EXP</i>	<i>M.U.</i>
154		UARTOpReq	1920	R	Request download alarm history or historic data via serial	WORD		0 ... 3	0		num
179		FncEconomySuction1	4631	R	Economy, suction section	WORD		0 ... 1	0		flag
180		FncEconomySuction2	4632	R	Economy function, suction section 2 active	WORD		0 ... 1	0		flag
181		FncEconomyDischarge	4633	R	Economy, delivery section	WORD		0 ... 1	0		flag
182		FncAUX1	4634	R	AUX output 1 active	WORD		0 ... 1	0		flag
183		FncAUX2	4635	R	AUX output 2 active	WORD		0 ... 1	0		flag
184		FncAUX3	4636	R	AUX output 3 active	WORD		0 ... 1	0		flag
185		FncAUX4	4637	R	AUX output 4 active	WORD		0 ... 1	0		flag
186		FncEnergySaving	4638	R	Energy saving function	WORD		0 ... 1	0		flag
187		FncMute	4639	R	Alarm acknowledgment	WORD		0 ... 1	0		flag
188		FncHeatRecovery	4640	R	Heat recovery	WORD		0 ... 1	0		flag
189		FncLiquidReturnOfControl1	4641	R	Liquid return control, suction section	WORD		0 ... 1	0		flag
190		FncLiquidReturnOfControl2	4642	R	Liquid return control function flag, suction section 2	WORD		0 ... 1	0		flag
191		FncHotGasDefrost1	4643	R	Liquid return control, suction section	WORD		0 ... 1	0		flag

<i>INDEX</i>	<i>FOLDER</i>	<i>LABEL</i>	<i>ADDRESS</i>	<i>R/W</i>	<i>DESCRIPTION</i>	<i>DATA SIZE</i>	<i>CPL</i>	<i>RANGE</i>	<i>DEFAULT</i>	<i>EXP</i>	<i>M.U.</i>
192		FncHotGasDefrost2	4644	R	Liquid return control function flag, suction section 2	WORD		0 ... 1	0		flag
193		KompPower1	4645	R	Power generated by compressor 1	WORD		0 ... 100	0		num
194		KompPower2	4646	R	Power generated by compressor 2	WORD		0 ... 100	0		num
195		KompPower3	4647	R	Power generated by compressor 3	WORD		0 ... 100	0		num
196		KompPower4	4648	R	Power generated by compressor 4	WORD		0 ... 100	0		num
197		KompPower5	4649	R	Power generated by compressor 5	WORD		0 ... 100	0		num
198		KompPower6	4650	R	Power generated by compressor 6	WORD		0 ... 100	0		num
199		KompPower7	4651	R	Power generated by compressor 7	WORD		0 ... 100	0		num
200		KompPower8	4652	R	Power generated by compressor 8	WORD		0 ... 100	0		num
201		KompPower9	4653	R	Power generated by compressor 9	WORD		0 ... 100	0		num
202		KompPower10	4654	R	Power generated by compressor 10	WORD		0 ... 100	0		num
203		KompPower11	4655	R	Power generated by compressor 11	WORD		0 ... 100	0		num
204		KompPower12	4656	R	Power generated by compressor 12	WORD		0 ... 100	0		num
205		KompPowerInv1	4657	R	Power generated by compressor piloted by inverter, suction section	WORD		0 ... 100	0		num
206		KompPowerInv2	4658	R	Power of compressor piloted by the inverter, suction section 2	WORD		0 ... 100	0		num
207		KompStatus1	4659	R	Compressor 1	WORD		0 ... 32767	0		flag

<i>INDEX</i>	<i>FOLDER</i>	<i>LABEL</i>	<i>ADDRESS</i>	<i>R/W</i>	<i>DESCRIPTION</i>	<i>DATA SIZE</i>	<i>CPL</i>	<i>RANGE</i>	<i>DEFAULT</i>	<i>EXP</i>	<i>M.U.</i>
208		KompStatus2	4660	R	Compressor 2	WORD		0 ... 32767	0		flag
209		KompStatus3	4661	R	Compressor 3	WORD		0 ... 32767	0		flag
210		KompStatus4	4662	R	Compressor 4	WORD		0 ... 32767	0		flag
211		KompStatus5	4663	R	Compressor 5	WORD		0 ... 32767	0		flag
212		KompStatus6	4664	R	Compressor 6	WORD		0 ... 32767	0		flag
213		KompStatus7	4665	R	Compressor 7	WORD		0 ... 32767	0		flag
214		KompStatus8	4666	R	Compressor 8	WORD		0 ... 32767	0		flag
215		KompStatus9	4667	R	Compressor 9	WORD		0 ... 32767	0		flag
216		KompStatus10	4668	R	Compressor 10	WORD		0 ... 32767	0		flag
217		KompStatus11	4669	R	Compressor 11	WORD		0 ... 32767	0		flag
218		KompStatus12	4670	R	Compressor 12	WORD		0 ... 32767	0		flag
219		KompStatusInv1	4671	R	Compressor piloted by inverter, suction section	WORD		0 ... 32767	0		flag
220		KompStatusInv2	4672	R	State of compressor piloted by inverter, suction section 2	WORD		0 ... 32767	0		flag
221		KompActiveNoCircuit1	4673	R	Number of compressors on, suction section	WORD		0 ... 12	0		num
222		KompStepNoCircuit1	4674	R	Number of steps on, suction section	WORD		0 ... 72	0		num
223		KompActiveNoCircuit2	4675	R	Number of compressors on, suction section 2	WORD		0 ... 12	0		num
224		KompStepNoCircuit2	4676	R	Number of steps on, suction section 2	WORD		0 ... 72	0		num
225		FanPowerInv	4677	R	Power generated by fans piloted by inverter, delivery section	WORD		0 ... 100	0		num
226		FanStatus1	4678,2	R	Fan state 1	1 bit		0 ... 1	0		flag
227		FanStatus2	4679,2	R	Fan state 2	1 bit		0 ... 1	0		flag

<i>INDEX</i>	<i>FOLDER</i>	<i>LABEL</i>	<i>ADDRESS</i>	<i>R/W</i>	<i>DESCRIPTION</i>	<i>DATA SIZE</i>	<i>CPL</i>	<i>RANGE</i>	<i>DEFAULT</i>	<i>EXP</i>	<i>M.U.</i>
228		FanStatus3	4680,2	R	Fan state 3	1 bit		0 ... 1	0		flag
229		FanStatus4	4681,2	R	Fan state 4	1 bit		0 ... 1	0		flag
230		FanStatus5	4682,2	R	Fan state 5	1 bit		0 ... 1	0		flag
231		FanStatus6	4683,2	R	Fan state 6	1 bit		0 ... 1	0		flag
232		FanStatus7	4684,2	R	Fan state 7	1 bit		0 ... 1	0		flag
233		FanStatus8	4685,2	R	Fan state 8	1 bit		0 ... 1	0		flag
234		FanStatusInv	4686	R	Fan piloted by inverter, delivery section	WORD		0 ... 32767	0		flag
235		FanActiveNo	4687	R	Number of fans on, delivery section	WORD		0 ... 8	0		num
236		SuctionProbeCircuit1	4688	R	Suction probe	WORD	Y	-32768 ... 32767	0	-2	bar
237		SuctionProbeCircuit1	4688	R	Suction probe	WORD	Y	-32768 ... 32767	0	-1	Psi/°C/°F
238		SuctionProbeCircuit2	4689	R	Suction probe in section 2	WORD	Y	-32768 ... 32767	0	-2	bar
239		SuctionProbeCircuit2	4689	R	Suction probe in section 2	WORD	Y	-32768 ... 32767	0	-1	Psi/°C/°F
240		DischargeProbe	4690	R	Delivery probe	WORD	Y	-32768 ... 32767	0	-1	bar/°C/°F
241		DischargeProbe	4690	R	Delivery probe	WORD	Y	-32768 ... 32767	0		Psi
242		SetPointSuctionCircuit1	4691	R	Regulation setpoint, suction section	WORD	Y	-32768 ... 32767	0	-2	bar
243		SetPointSuctionCircuit1	4691	R	Regulation setpoint, suction section	WORD	Y	-32768 ... 32767	0	-1	Psi/°C/°F

<i>INDEX</i>	<i>FOLDER</i>	<i>LABEL</i>	<i>ADDRESS</i>	<i>R/W</i>	<i>DESCRIPTION</i>	<i>DATA SIZE</i>	<i>CPL</i>	<i>RANGE</i>	<i>DEFAULT</i>	<i>EXP</i>	<i>M.U.</i>
244		SetPointSuctionCircuit2	4692	R	Suction section setpoint 2	WORD	Y	-32768 ... 32767	0	-2	bar
245		SetPointSuctionCircuit2	4692	R	Suction section setpoint 2	WORD	Y	-32768 ... 32767	0	-1	Psi/°C/°F
246		SetPointDischarge	4693	R	Regulation setpoint, delivery section	WORD	Y	-32768 ... 32767	0	-1	bar/°C/°F
247		SetPointDischarge	4693	R	Regulation setpoint, delivery section	WORD	Y	-32768 ... 32767	0		Psi
254		133 - SEt	4864	R	Setpoint, suction section	WORD	Y	-1500 ... 9999	0	-2	bar
255		133 - SEt	4864	R	Setpoint, suction section	WORD	Y	-1500 ... 9999	0	-1	Psi/°C/°F
256		134 - Pbd	4865	R	Proportional band, suction section	WORD	Y	-1500 ... 9999	0	-2	bar
257		134 - Pbd	4865	R	Proportional band, suction section	WORD	Y	-1500 ... 9999	0	-1	Psi/°C/°F
258		135 - PbdE	4866	R	Proportional band 1, suction section	WORD	Y	-1500 ... 9999	0	-2	bar
259		135 - PbdE	4866	R	Proportional band 1, suction section	WORD	Y	-1500 ... 9999	0	-1	Psi/°C/°F
260		136 - dSPo1	4867	R	Economy maximum offset 1, suction section	WORD	Y	-1500 ... 9999	0	-2	bar
261		136 - dSPo1	4867	R	Economy maximum offset 1, suction section	WORD	Y	-1500 ... 9999	0	-1	Psi/°C/°F

<i>INDEX</i>	<i>FOLDER</i>	<i>LABEL</i>	<i>ADDRESS</i>	<i>R/W</i>	<i>DESCRIPTION</i>	<i>DATA SIZE</i>	<i>CPL</i>	<i>RANGE</i>	<i>DEFAULT</i>	<i>EXP</i>	<i>M.U.</i>
262		137 - dSPo2	4868	R	Economy maximum offset 2, suction section	WORD	Y	-1500 ... 9999	0	-2	bar
263		137 - dSPo2	4868	R	Economy maximum offset 2, suction section	WORD	Y	-1500 ... 9999	0	-1	Psi/°C/°F
264		138 - dLAL	4869	R	Minimum alarm delta, suction section	WORD	Y	-1500 ... 9999	0	-2	bar
265		138 - dLAL	4869	R	Minimum alarm delta, suction section	WORD	Y	-1500 ... 9999	0	-1	Psi/°C/°F
266		139 - LAL	4870	R	Minimum alarm threshold, suction section	WORD	Y	-1500 ... 9999	0	-2	bar
267		139 - LAL	4870	R	Minimum alarm threshold, suction section	WORD	Y	-1500 ... 9999	0	-1	Psi/°C/°F
268		140 - dHAL	4871	R	Maximum alarm delta, suction section	WORD	Y	-1500 ... 9999	0	-2	bar
269		140 - dHAL	4871	R	Maximum alarm delta, suction section	WORD	Y	-1500 ... 9999	0	-1	Psi/°C/°F
270		141 - HAL	4872	R	Maximum alarm threshold, suction section	WORD	Y	-1500 ... 9999	0	-2	bar
271		141 - HAL	4872	R	Maximum alarm threshold, suction section	WORD	Y	-1500 ... 9999	0	-1	Psi/°C/°F

<i>INDEX</i>	<i>FOLDER</i>	<i>LABEL</i>	<i>ADDRESS</i>	<i>R/W</i>	<i>DESCRIPTION</i>	<i>DATA SIZE</i>	<i>CPL</i>	<i>RANGE</i>	<i>DEFAULT</i>	<i>EXP</i>	<i>M.U.</i>
272		142 - Cod1	4873	R	Proportional band continuous regulator hysteresis, suction section	WORD	Y	-1500 ... 9999	0	-2	bar
273		142 - Cod1	4873	R	Proportional band continuous regulator hysteresis, suction section	WORD	Y	-1500 ... 9999	0	-1	Psi/°C/°F
274		143 - Cod2	4874	R	Proportional band continuous regulator delta, suction section	WORD	Y	-1500 ... 9999	0	-2	bar
275		143 - Cod2	4874	R	Proportional band continuous regulator delta, suction section	WORD	Y	-1500 ... 9999	0	-1	Psi/°C/°F
276		144 - InLPt	4875	R	Switch-off inverter threshold, suction section	WORD	Y	-1500 ... 9999	0	-2	bar
277		144 - InLPt	4875	R	Switch-off inverter threshold, suction section	WORD	Y	-1500 ... 9999	0	-1	Psi/°C/°F

<i>INDEX</i>	<i>FOLDER</i>	<i>LABEL</i>	<i>ADDRESS</i>	<i>R/W</i>	<i>DESCRIPTION</i>	<i>DATA SIZE</i>	<i>CPL</i>	<i>RANGE</i>	<i>DEFAULT</i>	<i>EXP</i>	<i>M.U.</i>
278		145 - AtdS	4876	R	External temperature setpoint dynamic setpoint, suction section	WORD	Y	-1500 ... 9999	0	-1	°C/°F
279		146 - dAtdS	4877	R	External temperature delta dynamic regulation setpoint, suction section	WORD	Y	-1500 ... 9999	0	-1	°C/°F
280		233 - SEt	4896	R	Suction section setpoint 2	WORD	Y	-1500 ... 9999	0	-2	bar
281		233 - SEt	4896	R	Suction section setpoint 2	WORD	Y	-1500 ... 9999	0	-1	Psi/°C/°F
282		234 - Pbd	4897	R	Proportional band in the suction section 2	WORD	Y	-1500 ... 9999	0	-2	bar
283		234 - Pbd	4897	R	Proportional band in the suction section 2	WORD	Y	-1500 ... 9999	0	-1	Psi/°C/°F
284		235 - PbdE	4898	R	Proportional band 1 in the suction section 2	WORD	Y	-1500 ... 9999	0	-2	bar
285		235 - PbdE	4898	R	Proportional band 1 in the suction section 2	WORD	Y	-1500 ... 9999	0	-1	Psi/°C/°F
286		236 - dSPo1	4899	R	Economy function maximum offset 1 in suction section 2	WORD	Y	-1500 ... 9999	0	-2	bar

<i>INDEX</i>	<i>FOLDER</i>	<i>LABEL</i>	<i>ADDRESS</i>	<i>R/W</i>	<i>DESCRIPTION</i>	<i>DATA SIZE</i>	<i>CPL</i>	<i>RANGE</i>	<i>DEFAULT</i>	<i>EXP</i>	<i>M.U.</i>
287		236 - dSPo1	4899	R	Economy function maximum offset 1 in suction section 2	WORD	Y	-1500 ... 9999	0	-1	Psi/°C/°F
288		237 - dSPo2	4900	R	Economy function maximum offset 2 in suction section 2	WORD	Y	-1500 ... 9999	0	-2	bar
289		237 - dSPo2	4900	R	Economy function maximum offset 2 in suction section 2	WORD	Y	-1500 ... 9999	0	-1	Psi/°C/°F
290		238 - dLAL	4901	R	Low alarm delta, suction section 2	WORD	Y	-1500 ... 9999	0	-2	bar
291		238 - dLAL	4901	R	Low alarm delta, suction section 2	WORD	Y	-1500 ... 9999	0	-1	Psi/°C/°F
292		239 - LAL	4902	R	Low alarm threshold, suction section 2	WORD	Y	-1500 ... 9999	0	-2	bar
293		239 - LAL	4902	R	Low alarm threshold, suction section 2	WORD	Y	-1500 ... 9999	0	-1	Psi/°C/°F
294		240 - dHAL	4903	R	High alarm delta, suction section 2	WORD	Y	-1500 ... 9999	0	-2	bar
295		240 - dHAL	4903	R	High alarm delta, suction section 2	WORD	Y	-1500 ... 9999	0	-1	Psi/°C/°F

<i>INDEX</i>	<i>FOLDER</i>	<i>LABEL</i>	<i>ADDRESS</i>	<i>R/W</i>	<i>DESCRIPTION</i>	<i>DATA SIZE</i>	<i>CPL</i>	<i>RANGE</i>	<i>DEFAULT</i>	<i>EXP</i>	<i>M.U.</i>
296		241 - HAL	4904	R	High alarm threshold, suction section 2	WORD	Y	-1500 ... 9999	0	-2	bar
297		241 - HAL	4904	R	High alarm threshold, suction section 2	WORD	Y	-1500 ... 9999	0	-1	Psi/°C/°F
298		242 - Cod1	4905	R	Proportional band continuous regulator hysteresis, suction section 2	WORD	Y	-1500 ... 9999	0	-2	bar
299		242 - Cod1	4905	R	Proportional band continuous regulator hysteresis, suction section 2	WORD	Y	-1500 ... 9999	0	-1	Psi/°C/°F
300		243 - Cod2	4906	R	Proportional band continuous regulator delta, suction section 2	WORD	Y	-1500 ... 9999	0	-2	bar
301		243 - Cod2	4906	R	Proportional band continuous regulator delta, suction section 2	WORD	Y	-1500 ... 9999	0	-1	Psi/°C/°F

<i>INDEX</i>	<i>FOLDER</i>	<i>LABEL</i>	<i>ADDRESS</i>	<i>R/W</i>	<i>DESCRIPTION</i>	<i>DATA SIZE</i>	<i>CPL</i>	<i>RANGE</i>	<i>DEFAULT</i>	<i>EXP</i>	<i>M.U.</i>
302		244 - InLPt	4907	R	Suction probe reading below which the inverter is switched off even if forced on at minimum, suction section 2	WORD	Y	-1500 ... 9999	0	-2	bar
303		244 - InLPt	4907	R	Suction probe reading below which the inverter is switched off even if forced on at minimum, suction section 2	WORD	Y	-1500 ... 9999	0	-1	Psi/°C/°F
304		245 - AtdS	4908	R	External temperature setpoint for dynamic setpoint, suction section 2	WORD	Y	-1500 ... 9999	0	-1	°C/°F
305		246 - dAtdS	4909	R	External temperature delta dynamic setpoint, suction section 2	WORD	Y	-1500 ... 9999	0	-1	°C/°F
306		333 - SEt	4928	R	Setpoint, delivery section	WORD	Y	-1500 ... 9999	0	-1	bar/°C/°F
307		333 - SEt	4928	R	Setpoint, delivery section	WORD	Y	-1500 ... 9999	0		Psi
308		334 - Pbd	4929	R	Proportional band, delivery section	WORD	Y	-1500 ... 9999	0	-1	bar/°C/°F
309		334 - Pbd	4929	R	Proportional band, delivery section	WORD	Y	-1500 ... 9999	0		Psi

<i>INDEX</i>	<i>FOLDER</i>	<i>LABEL</i>	<i>ADDRESS</i>	<i>R/W</i>	<i>DESCRIPTION</i>	<i>DATA SIZE</i>	<i>CPL</i>	<i>RANGE</i>	<i>DEFAULT</i>	<i>EXP</i>	<i>M.U.</i>
310		335 - Cod1	4930	R	Proportional band continuous regulator hysteresis, delivery section	WORD	Y	-1500 ... 9999	0	-1	bar/°C/°F
311		335 - Cod1	4930	R	Proportional band continuous regulator hysteresis, delivery section	WORD	Y	-1500 ... 9999	0		Psi
312		336 - Cod2	4931	R	Proportional band continuous regulator delta, delivery section	WORD	Y	-1500 ... 9999	0	-1	bar/°C/°F
313		336 - Cod2	4931	R	Proportional band continuous regulator delta, delivery section	WORD	Y	-1500 ... 9999	0		Psi
314		337 - dHAL	4932	R	High alarm delta, delivery section	WORD	Y	-1500 ... 9999	0	-1	bar/°C/°F
315		337 - dHAL	4932	R	High alarm delta, delivery section	WORD	Y	-1500 ... 9999	0		Psi
316		338 - HAL	4933	R	High alarm threshold, delivery section	WORD	Y	-1500 ... 9999	0	-1	bar/°C/°F
317		338 - HAL	4933	R	High alarm threshold, delivery section	WORD	Y	-1500 ... 9999	0		Psi
318		339 - dSFo	4934	R	Condensation dynamic setpoint offset	WORD	Y	-1500 ... 9999	0	-1	bar/°C/°F

<i>INDEX</i>	<i>FOLDER</i>	<i>LABEL</i>	<i>ADDRESS</i>	<i>R/W</i>	<i>DESCRIPTION</i>	<i>DATA SIZE</i>	<i>CPL</i>	<i>RANGE</i>	<i>DEFAULT</i>	<i>EXP</i>	<i>M.U.</i>
319		339 - dSfo	4934	R	Condensation dynamic setpoint offset	WORD	Y	-1500 ... 9999	0		Psi
320		340 - HPP1	4935	R	High alarm prevention warning 1 threshold, delivery section	WORD	Y	-1500 ... 9999	0	-1	bar/°C/°F
321		340 - HPP1	4935	R	High alarm prevention warning 1 threshold, delivery section	WORD	Y	-1500 ... 9999	0		Psi
322		341 - HPP2	4936	R	High alarm prevention warning 2 threshold, delivery section	WORD	Y	-1500 ... 9999	0	-1	bar/°C/°F
323		341 - HPP2	4936	R	High alarm prevention warning 2 threshold, delivery section	WORD	Y	-1500 ... 9999	0		Psi
324		342 - HPPb	4937	R	High alarm prevention proportional band, delivery section	WORD	Y	-1500 ... 9999	0	-1	bar/°C/°F
325		342 - HPPb	4937	R	High alarm prevention proportional band, delivery section	WORD	Y	-1500 ... 9999	0		Psi
326		343 - dLAL	4938	R	Minimum alarm delta, delivery section	WORD	Y	-1500 ... 9999	0	-1	bar/°C/°F
327		343 - dLAL	4938	R	Minimum alarm delta, delivery section	WORD	Y	-1500 ... 9999	0		Psi
328		344 - LAL	4939	R	Minimum alarm threshold, delivery section	WORD	Y	-1500 ... 9999	0	-1	bar/°C/°F

<i>INDEX</i>	<i>FOLDER</i>	<i>LABEL</i>	<i>ADDRESS</i>	<i>R/W</i>	<i>DESCRIPTION</i>	<i>DATA SIZE</i>	<i>CPL</i>	<i>RANGE</i>	<i>DEFAULT</i>	<i>EXP</i>	<i>M.U.</i>
329		344 - LAL	4939	R	Minimum alarm threshold, delivery section	WORD	Y	-1500 ... 9999	0		Psi
330		345 - InLPt	4940	R	Switch-off inverter threshold, delivery section	WORD	Y	-1500 ... 9999	0	-1	bar/°C/°F
331		345 - InLPt	4940	R	Switch-off inverter threshold, delivery section	WORD	Y	-1500 ... 9999	0		Psi
332		346 - dSdo	4941	R	Dynamic offset dynamic condensation setpoint	WORD	Y	-1500 ... 9999	0	-1	°C/°F
333		347 - dSLdo	4942	R	Minimum dynamic offset dynamic condensation setpoint	WORD	Y	-1500 ... 9999	0	-1	°C/°F
334		348 - dSMEt	4943	R	Maximum external temperature to enable dynamic floating condensation setpoint (regulation)	WORD	Y	-1500 ... 9999	0	-1	°C/°F
335		349 - LdSP	4944	R	Minimum dynamic setpoint for floating condensation, delivery section	WORD	Y	-1500 ... 9999	0	-1	°C/°F
336		350 - SCt1	4945	R	Sub-cooling setpoint 1 for dynamic condensation setpoint, delivery section	WORD	Y	-1500 ... 9999	0	-1	°C/°F

<i>INDEX</i>	<i>FOLDER</i>	<i>LABEL</i>	<i>ADDRESS</i>	<i>R/W</i>	<i>DESCRIPTION</i>	<i>DATA SIZE</i>	<i>CPL</i>	<i>RANGE</i>	<i>DEFAULT</i>	<i>EXP</i>	<i>M.U.</i>
337		351 - SCt2	4946	R	Sub-cooling setpoint 2 for dynamic condensation setpoint, delivery section	WORD	Y	-1500 ... 9999	0	-1	°C/°F
338		352 - SCd1	4947	R	Delta lower than sub-cooling setpoint for dynamic condensation setpoint in delivery	WORD	Y	-1500 ... 9999	0	-1	°C/°F
339		353 - SCoF1	4948	R	Correction below dynamic condensation setpoint for sub-cooling in delivery	WORD	Y	-1500 ... 9999	0	-1	°C/°F
340		354 - SCd2	4949	R	Delta greater than sub-cooling setpoint for dynamic condensation setpoint in delivery (regulation)	WORD	Y	-1500 ... 9999	0	-1	°C/°F
341		355 - SCoF2	4950	R	Correction above dynamic condensation setpoint for sub-cooling in delivery (regulation)	WORD	Y	-1500 ... 9999	0	-1	°C/°F
342		356 - EtPr	4951	R	Minimum delta between sub-temperature probe and external ambient temperature to enable dynamic setpoint in delivery	WORD	Y	-1500 ... 9999	0	-1	°C/°F
343		557 - Hrto	4952	R	Upper threshold to activate heat recovery	WORD	Y	-1500 ... 9999	0	-1	°C/°F

<i>INDEX</i>	<i>FOLDER</i>	<i>LABEL</i>	<i>ADDRESS</i>	<i>R/W</i>	<i>DESCRIPTION</i>	<i>DATA SIZE</i>	<i>CPL</i>	<i>RANGE</i>	<i>DEFAULT</i>	<i>EXP</i>	<i>M.U.</i>
344		558 - Hrdt	4953	R	Temperature hysteresis to disable heat recovery	WORD	Y	-1500 ... 9999	0	-1	°C/°F
345		CMD_RESET_STORICO_ALLARMI	319	R	Reset alarm history	WORD		0 ... 1	0		flag
347		CMD_RESET_ALLARMI	321	R	Alarm manual reset	WORD		0 ... 1	0		flag
348		CMD_FNCECONOMYSUCTION1_TOGGLE	322	R	Enable/disable economy, suction section	WORD		0 ... 1	0		flag
349		CMD_FNCECONOMYSUCTION2_TOGGLE	323	R	Enable/disable economy, suction section2	WORD		0 ... 1	0		flag
350		CMD_FNCECONOMYDISCHARGE_TOGGLE	324	R	Enable/disable economy, delivery section	WORD		0 ... 1	0		flag
351		CMD_FNCAUX1_TOGGLE	325	R	On/Off Auxiliary 1	WORD		0 ... 1	0		flag
352		CMD_FNCAUX2_TOGGLE	326	R	On/Off Auxiliary 2	WORD		0 ... 1	0		flag
353		CMD_FNCAUX3_TOGGLE	327	R	On/Off Auxiliary 3	WORD		0 ... 1	0		flag
354		CMD_FNCAUX4_TOGGLE	328	R	On/Off Auxiliary 4	WORD		0 ... 1	0		flag
355		CMD_FNCENERGYSAVING_TOGGLE	329	R	Enable/disable energy saving	WORD		0 ... 1	0		flag
356		CMD_FNCMUTE_ON	330	R	Alarm silencing	WORD		0 ... 1	0		flag
357		CMD_RESET_ORE_COMPRESSORE_1	331	R	Reset compressor running time 1	WORD		0 ... 1	0		flag
358		CMD_RESET_ORE_COMPRESSORE_2	332	R	Reset compressor running time 2	WORD		0 ... 1	0		flag
359		CMD_RESET_ORE_COMPRESSORE_3	333	R	Reset compressor running time 3	WORD		0 ... 1	0		flag
360		CMD_RESET_ORE_COMPRESSORE_4	334	R	Reset compressor running time 4	WORD		0 ... 1	0		flag

<i>INDEX</i>	<i>FOLDER</i>	<i>LABEL</i>	<i>ADDRESS</i>	<i>R/W</i>	<i>DESCRIPTION</i>	<i>DATA SIZE</i>	<i>CPL</i>	<i>RANGE</i>	<i>DEFAULT</i>	<i>EXP</i>	<i>M.U.</i>
361		CMD_RESET_ORE_COMPRESSORE_5	335	R	Reset compressor running time 5	WORD		0 ... 1	0		flag
362		CMD_RESET_ORE_COMPRESSORE_6	336	R	Reset compressor running time 6	WORD		0 ... 1	0		flag
363		CMD_RESET_ORE_COMPRESSORE_7	337	R	Reset compressor running time 7	WORD		0 ... 1	0		flag
364		CMD_RESET_ORE_COMPRESSORE_8	338	R	Reset compressor running time 8	WORD		0 ... 1	0		flag
365		CMD_RESET_ORE_COMPRESSORE_9	339	R	Reset compressor running time 9	WORD		0 ... 1	0		flag
366		CMD_RESET_ORE_COMPRESSORE_10	340	R	Reset compressor running time 10	WORD		0 ... 1	0		flag
367		CMD_RESET_ORE_COMPRESSORE_11	341	R	Reset compressor running time 11	WORD		0 ... 1	0		flag
368		CMD_RESET_ORE_COMPRESSORE_12	342	R	Reset compressor running time 12	WORD		0 ... 1	0		flag
369		CMD_RESET_ORE_COMPRESSORE_INV_1	343	R	Reset running time of compressor piloted by the inverter, suction section	WORD		0 ... 1	0		flag
370		CMD_RESET_ORE_COMPRESSORE_INV_2	344	R	Reset running time of compressor piloted by inverter, suction section 2	WORD		0 ... 1	0		flag
371		CMD_RESET_ORE_VENTOLA_1	345	R	Reset fan running hours 1	WORD		0 ... 1	0		flag
372		CMD_RESET_ORE_VENTOLA_2	346	R	Reset fan running hours 2	WORD		0 ... 1	0		flag
373		CMD_RESET_ORE_VENTOLA_3	347	R	Reset fan running hours 3	WORD		0 ... 1	0		flag
374		CMD_RESET_ORE_VENTOLA_4	348	R	Reset fan running hours 4	WORD		0 ... 1	0		flag
375		CMD_RESET_ORE_VENTOLA_5	349	R	Reset fan running hours 5	WORD		0 ... 1	0		flag
376		CMD_RESET_ORE_VENTOLA_6	350	R	Reset fan running hours 6	WORD		0 ... 1	0		flag

<i>INDEX</i>	<i>FOLDER</i>	<i>LABEL</i>	<i>ADDRESS</i>	<i>R/W</i>	<i>DESCRIPTION</i>	<i>DATA SIZE</i>	<i>CPL</i>	<i>RANGE</i>	<i>DEFAULT</i>	<i>EXP</i>	<i>M.U.</i>
377		CMD_RESET_ORE_VENTOLA_7	351	R	Reset fan running hours 7	WORD		0 ... 1	0		flag
378		CMD_RESET_ORE_VENTOLA_8	352	R	Reset fan running hours 8	WORD		0 ... 1	0		flag
379		CMD_RESET_ORE_VENTILATORE_INV	353	R	Reset running time of the fan piloted by the inverter, delivery section	WORD		0 ... 1	0		flag
380		CMD_SELEZIONE_COMPRESSORE_1_TOGGLE	354	R	Select compressor 1	WORD		0 ... 1	0		flag
381		CMD_SELEZIONE_COMPRESSORE_2_TOGGLE	355	R	Select compressor 2	WORD		0 ... 1	0		flag
382		CMD_SELEZIONE_COMPRESSORE_3_TOGGLE	356	R	Select compressor 3	WORD		0 ... 1	0		flag
383		CMD_SELEZIONE_COMPRESSORE_4_TOGGLE	357	R	Select compressor 4	WORD		0 ... 1	0		flag
384		CMD_SELEZIONE_COMPRESSORE_5_TOGGLE	358	R	Select compressor 5	WORD		0 ... 1	0		flag
385		CMD_SELEZIONE_COMPRESSORE_6_TOGGLE	359	R	Select compressor 6	WORD		0 ... 1	0		flag
386		CMD_SELEZIONE_COMPRESSORE_7_TOGGLE	360	R	Select compressor 7	WORD		0 ... 1	0		flag
387		CMD_SELEZIONE_COMPRESSORE_8_TOGGLE	361	R	Select compressor 8	WORD		0 ... 1	0		flag
388		CMD_SELEZIONE_COMPRESSORE_9_TOGGLE	362	R	Select compressor 9	WORD		0 ... 1	0		flag
389		CMD_SELEZIONE_COMPRESSORE_10_TOGGLE	363	R	Select compressor 10	WORD		0 ... 1	0		flag
390		CMD_SELEZIONE_COMPRESSORE_11_TOGGLE	364	R	Select compressor 11	WORD		0 ... 1	0		flag
391		CMD_SELEZIONE_COMPRESSORE_12_TOGGLE	365	R	Select compressor 12	WORD		0 ... 1	0		flag
392		CMD_SELEZIONE_COMPRESSORE_INV_1_TOGGLE	366	R	Select compressor piloted by inverter, suction section	WORD		0 ... 1	0		flag

<i>INDEX</i>	<i>FOLDER</i>	<i>LABEL</i>	<i>ADDRESS</i>	<i>R/W</i>	<i>DESCRIPTION</i>	<i>DATA SIZE</i>	<i>CPL</i>	<i>RANGE</i>	<i>DEFAULT</i>	<i>EXP</i>	<i>M.U.</i>
393		CMD_SELEZIONE_COMPRESSORE_INV_2_TOGGLE	367	R	Select/deselect compressor piloted by inverter, suction section 2	WORD		0 ... 1	0		flag
394		CirC1PrLSuctionA_UI	2048	R	Low pressure switch, suction section	WORD		0 ... 2	0		num
395		CirC1PrHSuctionA_UI	2049	R	High pressure switch, suction section	WORD		0 ... 2	0		num
396		CirC2PrLSuctionA_UI	2050	R	Low pressure switch, suction section 2	WORD		0 ... 2	0		num
397		CirC2PrHSuctionA_UI	2051	R	High pressure switch, suction section 2	WORD		0 ... 2	0		num
398		CirC1HSuctionA_UI	2052	R	High pressure, suction section	WORD		0 ... 1	0		flag
399		CirC1LSuctionA_UI	2053	R	Low pressure, suction section	WORD		0 ... 1	0		flag
400		CirC2HSuctionA_UI	2054	R	High pressure, suction section 2	WORD		0 ... 1	0		flag
401		CirC2LSuctionA_UI	2055	R	Low pressure, suction section 2	WORD		0 ... 1	0		flag
402		PlanRefLiqLevA_UI	2056	R	Refrigerant level low	WORD		0 ... 2	0		num
403		PlanRefLiqLeakA_UI	2057	R	Refrigerant leakage	WORD		0 ... 2	0		num
404		FanPrLDischargeA_UI	2058	R	Low pressure switch, delivery section	WORD		0 ... 2	0		num
405		FanPrHDischargeA_UI	2059	R	High pressure switch, delivery section	WORD		0 ... 2	0		num
406		FanHDischargeA_UI	2060	R	High pressure, delivery section	WORD		0 ... 1	0		flag
407		FanLDischargeA_UI	2061	R	Low pressure, delivery section	WORD		0 ... 1	0		flag
408		FansTherA_1_UI	2062	R	Thermal protection fan 1 (manual reset)	WORD		0 ... 1	0		flag
409		FansTherA_2_UI	2063	R	Thermal protection fan 2 (manual reset)	WORD		0 ... 1	0		flag
410		FansTherA_3_UI	2064	R	Thermal protection fan 3 (manual reset)	WORD		0 ... 1	0		flag

<i>INDEX</i>	<i>FOLDER</i>	<i>LABEL</i>	<i>ADDRESS</i>	<i>R/W</i>	<i>DESCRIPTION</i>	<i>DATA SIZE</i>	<i>CPL</i>	<i>RANGE</i>	<i>DEFAULT</i>	<i>EXP</i>	<i>M.U.</i>
411		FansTherA_4_UI	2065	R	Thermal protection fan 4 (manual reset)	WORD		0 ... 1	0		flag
412		FansTherA_5_UI	2066	R	Thermal protection fan 5 (manual reset)	WORD		0 ... 1	0		flag
413		FansTherA_6_UI	2067	R	Thermal protection fan 6 (manual reset)	WORD		0 ... 1	0		flag
414		FansTherA_7_UI	2068	R	Thermal protection fan 7 (manual reset)	WORD		0 ... 1	0		flag
415		FansTherA_8_UI	2069	R	Thermal protection fan 8 (manual reset)	WORD		0 ... 1	0		flag
416		FansInvTherA_UI	2070	R	Thermal switch for fan piloted by inverter, delivery section	WORD		0 ... 1	0		flag
417		FansInvErrA_UI	2071	R	Inverter error, delivery section	WORD		0 ... 1	0		flag
418		FansMaintenanceA_1_UI	2072	R	Fan exceeded running time 1	WORD		0 ... 2	0		num
419		FansMaintenanceA_2_UI	2073	R	Fan exceeded running time 2	WORD		0 ... 2	0		num
420		FansMaintenanceA_3_UI	2074	R	Fan exceeded running time 3	WORD		0 ... 2	0		num
421		FansMaintenanceA_4_UI	2075	R	Fan exceeded running time 4	WORD		0 ... 2	0		num
422		FansMaintenanceA_5_UI	2076	R	Fan exceeded running time 5	WORD		0 ... 2	0		num
423		FansMaintenanceA_6_UI	2077	R	Fan exceeded running time 6	WORD		0 ... 2	0		num
424		FansMaintenanceA_7_UI	2078	R	Fan exceeded running time 7	WORD		0 ... 2	0		num

<i>INDEX</i>	<i>FOLDER</i>	<i>LABEL</i>	<i>ADDRESS</i>	<i>R/W</i>	<i>DESCRIPTION</i>	<i>DATA SIZE</i>	<i>CPL</i>	<i>RANGE</i>	<i>DEFAULT</i>	<i>EXP</i>	<i>M.U.</i>
425		FansMaintenanceA_8_UI	2079	R	Fan exceeded running time 8	WORD		0 ... 2	0		num
426		FansInvMaintenanceA_UI	2080	R	Running time of fan piloted by inverter exceeded, delivery section	WORD		0 ... 2	0		num
427		CirC1KompOilPDifA_UI	2081	R	Oil pressure differential, suction section	WORD		0 ... 1	0		flag
428		CirC2KompOilPDifA_UI	2082	R	Oil pressure differential, suction section	WORD		0 ... 1	0		flag
429		CirC1KompHPA_UI	2083	R	High pressure compressor, suction section	WORD		0 ... 1	0		flag
430		CirC2KompHPA_UI	2084	R	High pressure compressor, suction section 2	WORD		0 ... 1	0		flag
431		CirC1KompLPA_UI	2085	R	Low pressure compressor, suction section	WORD		0 ... 1	0		flag
432		CirC2KompLPA_UI	2086	R	Low pressure compressor, suction section 2	WORD		0 ... 1	0		flag
433		CirC1KompTherA_UI	2087	R	Compressor thermal switch, suction section	WORD		0 ... 1	0		flag
434		CirC2KompTherA_UI	2088	R	Compressor thermal switch, suction section 2	WORD		0 ... 1	0		flag
435		KompMaintenanceA_1_UI	2089	R	Compressor 1 operating hours exceeded warning	WORD		0 ... 2	0		num

<i>INDEX</i>	<i>FOLDER</i>	<i>LABEL</i>	<i>ADDRESS</i>	<i>R/W</i>	<i>DESCRIPTION</i>	<i>DATA SIZE</i>	<i>CPL</i>	<i>RANGE</i>	<i>DEFAULT</i>	<i>EXP</i>	<i>M.U.</i>
436		KompMaintenanceA_2_UI	2090	R	Compressor 2 operating hours exceeded warning	WORD		0 ... 2	0		num
437		KompMaintenanceA_3_UI	2091	R	Compressor 3 operating hours exceeded warning	WORD		0 ... 2	0		num
438		KompMaintenanceA_4_UI	2092	R	Compressor 4 operating hours exceeded warning	WORD		0 ... 2	0		num
439		KompMaintenanceA_5_UI	2093	R	Compressor 5 operating hours exceeded warning	WORD		0 ... 2	0		num
440		KompMaintenanceA_6_UI	2094	R	Compressor 6 operating hours exceeded warning	WORD		0 ... 2	0		num
441		KompMaintenanceA_7_UI	2095	R	Compressor 7 operating hours exceeded warning	WORD		0 ... 2	0		num
442		KompMaintenanceA_8_UI	2096	R	Compressor 8 operating hours exceeded warning	WORD		0 ... 2	0		num
443		KompMaintenanceA_9_UI	2097	R	Compressor 9 operating hours exceeded warning	WORD		0 ... 2	0		num
444		KompMaintenanceA_10_UI	2098	R	Compressor 10 operating hours exceeded warning	WORD		0 ... 2	0		num

<i>INDEX</i>	<i>FOLDER</i>	<i>LABEL</i>	<i>ADDRESS</i>	<i>R/W</i>	<i>DESCRIPTION</i>	<i>DATA SIZE</i>	<i>CPL</i>	<i>RANGE</i>	<i>DEFAULT</i>	<i>EXP</i>	<i>M.U.</i>
445		KompMaintenanceA_11_UI	2099	R	Compressor 11 operating hours exceeded warning	WORD		0 ... 2	0		num
446		KompMaintenanceA_12_UI	2100	R	Compressor 12 operating hours exceeded warning	WORD		0 ... 2	0		num
447		CirC1KoplInvBkA_UI	2101	R	Stop compressor piloted by inverter, suction section	WORD		0 ... 1	0		flag
448		CirC2KoplInvBkA_UI	2102	R	Stop compressor piloted by inverter, suction section 2	WORD		0 ... 1	0		flag
449		CirC1KoplInvMaintenanceA_UI	2103	R	Running time of compressor piloted by inverter has been exceeded, suction section	WORD		0 ... 2	0		num
450		CirC2KoplInvMaintenanceA_UI	2104	R	Running time of compressor piloted by inverter has been exceeded, suction section 2	WORD		0 ... 2	0		num
451		KompBkA_1_UI	2105	R	Stop compressor 1	WORD		0 ... 1	0		flag
452		KompBkA_2_UI	2106	R	Stop compressor 2	WORD		0 ... 1	0		flag
453		KompBkA_3_UI	2107	R	Stop compressor 3	WORD		0 ... 1	0		flag
454		KompBkA_4_UI	2108	R	Stop compressor 4	WORD		0 ... 1	0		flag
455		KompBkA_5_UI	2109	R	Stop compressor 5	WORD		0 ... 1	0		flag
456		KompBkA_6_UI	2110	R	Stop compressor 6	WORD		0 ... 1	0		flag
457		KompBkA_7_UI	2111	R	Stop compressor 7	WORD		0 ... 1	0		flag
458		KompBkA_8_UI	2112	R	Stop compressor 8	WORD		0 ... 1	0		flag
459		KompBkA_9_UI	2113	R	Stop compressor 9	WORD		0 ... 1	0		flag

<i>INDEX</i>	<i>FOLDER</i>	<i>LABEL</i>	<i>ADDRESS</i>	<i>R/W</i>	<i>DESCRIPTION</i>	<i>DATA SIZE</i>	<i>CPL</i>	<i>RANGE</i>	<i>DEFAULT</i>	<i>EXP</i>	<i>M.U.</i>
460		KompBkA_10_UI	2114	R	Stop compressor 10	WORD		0 ... 1	0		flag
461		KompBkA_11_UI	2115	R	Stop compressor 11	WORD		0 ... 1	0		flag
462		KompBkA_12_UI	2116	R	Stop compressor 12	WORD		0 ... 1	0		flag
463		CirC1KoplInvErrA_UI	2117	R	Inverter Error, suction section	WORD		0 ... 1	0		flag
464		CirC2KoplInvErrA_UI	2118	R	Inverter Error, suction section 2	WORD		0 ... 1	0		flag
465		CirC1RefOilLevA_UI	2119	R	Lubricant oil level low, suction section	WORD		0 ... 2	0		num
466		CirC2RefOilLevA_UI	2120	R	Oil level low, suction section 2	WORD		0 ... 2	0		num
467		PlanGenericA_UI	2121	R	General alarm	WORD		0 ... 1	0		flag
468		FanMaxPreventionA_UI	2122	R	Prevention timeout, delivery section	WORD		0 ... 1	0		flag
469		PlanIntTempSensErr_UI	2123	R	Internal temperature probe error	WORD		0 ... 1	0		flag
470		CirC1SuctionSensErr_UI	2124	R	Suction probe error, suction section	WORD		0 ... 1	0		flag
471		CirC2SuctionSensErr_UI	2125	R	Suction probe error, suction section 2	WORD		0 ... 1	0		flag
472		FanDischargeSensErr_UI	2126	R	Delivery probe error	WORD		0 ... 1	0		flag
473		PlanExtTempSensErr_UI	2127	R	External temperature probe error	WORD		0 ... 1	0		flag
474		PlanHrTempSensErr_UI	2128	R	Heat recovery temperature probe error	WORD		0 ... 1	0		flag
475		FanUcTempSensErr_UI	2129	R	Sub-cooling temperature probe error	WORD		0 ... 1	0		flag
476		BbxOpenError_UI	2130	R	Error opening logged data file	WORD		0 ... 1	0		flag
477		BbxWriteError_UI	2131	R	Error writing logged data file	WORD		0 ... 1	0		flag

INDEX	FOLDER	LABEL	ADDRESS	R/W	DESCRIPTION	DATA SIZE	CPL	RANGE	DEFAULT	EXP	M.U.
478		BbxCloseError_UI	2132	R	Error closing logged data file	WORD		0 ... 1	0		flag
479		BbxFullError_UI	2133	R	Logged data memory full error	WORD		0 ... 1	0		flag
480		PlanIOCfgErr_UI	2134	R	Configuration error alarm	WORD		0 ... 1	0		flag
481		PlanE2BiosErr_UI	2135	R	External eeprom CRC error alarm	WORD		0 ... 1	0		flag
482		PlanE2UserErr_UI	2136	R	External eeprom CRC error alarm	WORD		0 ... 1	0		flag
483		PlanRTCSupplyErr_UI	2137	R	RTA battery low alarm	WORD		0 ... 1	0		flag
484		PlanRTCAckErr_UI	2138	R	RTC communication error alarm	WORD		0 ... 1	0		flag
485		PlanRTCValueErr_UI	2139	R	Alarm RTC register value not consistent	WORD		0 ... 1	0		flag
532		CMD_MB_RQCONFIGCMD_ON	306	R	Request open configuration mode	WORD		0 ... 1	0		flag
533		CMD_MB_RQCONFIGCMD_OFF	306	R	Request exit configuration mode	WORD		0 ... 1	0		flag
534		CMD_MB_LOCK_PARMODIFIED_MBADDRESS_ON	421	R	Disable automatic update of associated parameters	WORD		0 ... 1	0		flag
535		CMD_MB_LOCK_PARMODIFIED_MBADDRESS_OFF	421	R	Automatic update of associated parameters active	WORD		0 ... 1	0		flag
536		CMD_UARTOPEREQ_AT_1	1921	R	Start downloading logged data via serial	WORD		0 ... 1	0		flag
537		CMD_UARTOPEREQ_AT_2	1921	R	Start downloading alarm history via serial	WORD		0 ... 1	0		flag
538		CMD_UARTOPEREQ_AT_3	1921	R	Cancel download via serial	WORD		0 ... 1	0		flag

Errors Possible / Subject to Alterations
 Con riserva di errori e modifiche
 Bajo reserva de error o modificación

Irrtum und Änderungen vorbehalten
Sous réserve d'erreurs et de modifications
Fouten en wijzigingen voorbehouden



2 DISCLAIMER

This document is exclusive property of **Eliwell Controls srl.** and cannot be reproduced and circulated unless expressly authorized by **Eliwell Controls srl**
Although all possible measures have been taken by **Eliwell Controls srl l.** to guarantee the accuracy of this document, it does not accept any responsibility arising out of its use.



3 ANALITIC INDEX

A		
<i>ADDRESS</i>	5	
<i>Address Configuration</i>	5	
<i>Address tables</i>	5	
C		
<i>Client table</i>	20	
<i>CPL</i>	6	
D		
<i>Data format (RTU)</i>	3	
<i>DATA SIZE</i>	6	
<i>DEFAULT</i>	6	
<i>Description of parameters</i>	5	
<i>DISCLAIMER</i>	51	
E		
<i>EXP</i>	6	
F		
<i>FOLDER</i>	5	
I		
<i>INDEX</i>	5	
L		
<i>LABEL</i>	5	
M		
<i>M.U.</i>	6	
<i>MODBUS FUNCTIONS AND RESOURCES</i>	3	
<i>Modbus functions available and data areas</i>	5	
<i>ModBus to multiple device connection diagram</i>	4	
N		
<i>Network</i>	4	
P		
<i>Parameters table</i>	6	
<i>Product identification</i>	5	
R		
<i>R/W</i>	6	
<i>RANGE</i>	6	



Eliwell Controls S.r.l.

Via dell' Industria, 15 Zona Industriale Paludi
32010 Pieve d' Alpago (BL) Italy
Telephone +39 0437 986 111
Facsimile +39 0437 989 066

Sales:

+39 0437 986 100 (Italy)
+39 0437 986 200 (other countries)
saleseliwell@invensys.com

Technical helpline:

+39 0437 986 300
E-mail techsuppeliwell@invensys.com

www.eliwell.it

ISO 9001

