

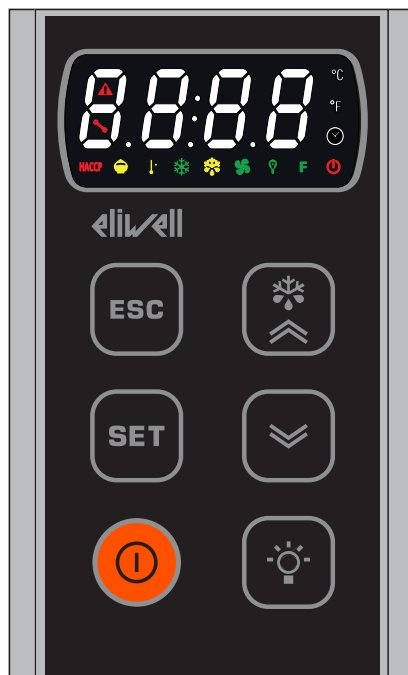


9IS2468601

# KDT SPLIT

www.eliwell.com

## USER INTERFACE



	<b>ALARM</b> On steadily: alarm active Flashing: alarm silenced Off: otherwise		<b>Fans icon</b> On steadily: fans active Flashing: fans forced Off: otherwise
	<b>Compressor icon</b> On steadily: compressor active Flashing: delay, protection or activation blocked Off: otherwise		<b>Defrost icon</b> On steadily: defrost active Flashing: dripping Off: otherwise
	<b>°C icon</b> On steadily: values displayed in °C Off: otherwise		<b>°F icon</b> On steadily: values displayed in °F Off: otherwise
	<b>LIGHT</b> On steadily: light on Off: otherwise		<b>ON/OFF</b> On steadily: The machine is OFF Off: The machine is ON
	<b>Reduced SET / Energy Saving icon</b> On steadily: energy saving active Rapid flashing: access to Installer parameters Off: otherwise		<b>NOT USED</b>
	<b>NOT USED</b>		<b>NOT USED</b>
	<b>NOT USED</b>		<b>NOT USED</b>

## KEYS

	<b>ESC</b> <b>Press and release</b> • Moves back up one level with respect to the current menu • Confirms the parameter value <b>Press for at least 5 seconds</b> Function can be configured by the user (see parameter H3x for the base)		<b>SET (ENTER)</b> <b>Press and release</b> • Displays alarms (if present) • Accesses the Machine Status menu <b>Press for at least 5 seconds</b> • Accesses the programming menu • Confirms the commands		<b>LIGHT (AUX)</b> <b>Press and release</b> Based on parameter H3x for the base <b>Press for at least 5 seconds</b> Function can be configured by the user (see parameter H3x for the base)
	<b>UP</b> <b>Press and release</b> • Scrolls the menu items • Increases the values <b>Press for at least 5 seconds</b> Activates the Manual Defrost function (see parameter H3x for the base)		<b>DOWN</b> <b>Press and release</b> • Scrolls the menu items • Decreases the values <b>Press for at least 5 seconds</b> Function can be configured by the user (see parameter H3x for the base)		<b>STAND-BY</b> <b>Press for at least 5 seconds</b> Based on parameter H3x for the base

## FLAMMABLE REFRIGERANT GASES

The use of flammable refrigerant gases depends on many factors, including current standards set out by national regulations or by relevant certifying authorities.

This device does not incorporate any known source of ignition, nevertheless the use of flammable refrigerant gases depends on risk factors, including local, regional and/or national standards.

The device and corresponding accessories described in the documentation supplied with the product require experience in the design and parameterization/programming of control systems for refrigeration and HVAC systems. Only you, i.e. the original equipment producers, installers or users, can be aware of the conditions and factors present, in addition to the applicable regulations during the planning, installation and setup, operation and maintenance of the machine, or the related processes. Therefore, only you can decide on the suitability of the automation and the associated equipment, and the resulting safety measures and interlock devices that can be applied effectively and adequately in the locations in which the relevant equipment is to be commissioned. When choosing the automation and control equipment - and any other related equipment or software - for a particular application, you must also take account of all applicable local, regional or national standards and/or regulations.

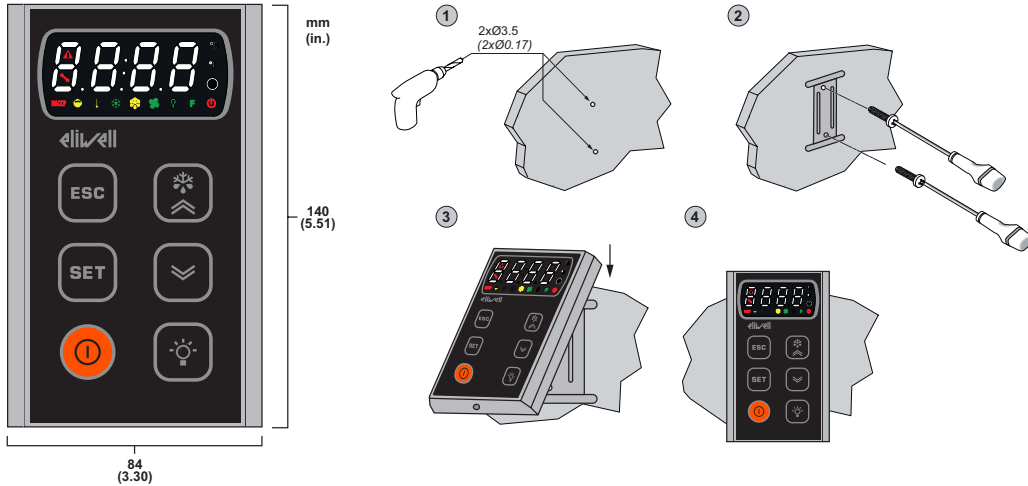
When using flammable refrigerant gases, at the end of the installation process for this controller and related equipment you must make sure the machine conforms to current standards and regulations. Although all the declarations and information contained herein are to be considered accurate and reliable, they are not covered by warranty. The information provided herein does not absolve the user from responsibility in terms of performing their own tests and certifications of conformity to all applicable regulations.

## ⚠ WARNING

### REGULATORY INCOMPATIBILITY

Make sure that all equipment used and systems designed comply with all applicable local, regional and national laws.  
**Failure to follow these instructions can result in death, serious injury, or equipment damage.**

### ASSEMBLY AND DIMENSIONS



### TECHNICAL DATA (EN 60730-2-9)

The product conforms to the following harmonized standards: EN 60730-1 and EN 60730-2-9

Device construction:	Independently mounted electronic control device
Application:	Operating control (not safety) device
Rated impulsive voltage:	330 V
Degree of pollution:	II
Type of action:	1
Mount:	panel, using the special bracket provided
Power supply:	12 Vdc ( $\pm 10\%$ ) from the power base
Dimensions:	140x84x33 mm (5.51x3.30x1.30 in.)
Terminals:	Screw for connection to the power base (maximum length: 10 m - 32.8 ft)
Temperature:	Usage: -5 ... 55°C (23 ... 131°F) - Storage: -20 ... 60°C (-4 ... 140°F)
Ambient humidity:	Use / Storage: 10...90% RH (non-condensing)
Overvoltage category	I
Software class:	A
Display:	display with 4 digits
Icons:	14 colored icons
Keys:	6 capacitive touch keys
Buzzer:	No

**NOTE:** For all technical information and regulations not mentioned in this section, please refer to the “Technical Data” section in the documents relating to the power base to which the keypad is connected.

### DIAGNOSTICS

If there is no communication between the keypad and the power base for more than 60 seconds, the **KDT SPLIT** keypad will show **E7**. If this happens, the keypad will remain fully switched off, except for the display which will show the label **E7**. When communication was restored the label **E7** will no longer appear on the display.

### KEYPAD LOCK

When it is switched on or if no buttons are pressed for at least 30 seconds, the keypad enters keypad lock mode. To exit keypad lock mode, press and hold any button for at least 3 seconds.

**ELECTRIC CONNECTIONS**

**⚡ ⚠ DANGER**

**HAZARD OF ELECTRIC SHOCK, EXPLOSION, ARC FLASH**

- Disconnect all power from all equipment including connected devices prior to removing any covers or doors, or installing or removing any accessories, hardware, cables or wires.
- Always use a properly rated voltage sensing device to confirm the power is off where and when indicated.
- Before restoring the power supply, replace and secure all covers, hardware components and cables.
- Use only the specified voltage when operating this equipment and any associated products.
- Do not apply dangerous voltages to the keypad connection terminals.

**Failure to follow these instructions will result in death or serious injury.**

The connectors and open circuit boards are extremely vulnerable to electrostatic discharge.

**⚠ WARNING**

**UNINTENDED EQUIPMENT OPERATION DUE TO ELECTROSTATIC DISCHARGE**

- Keep the device in the protective packaging until ready for installation.
- The device must only be installed in type-approved casing and/or in points that prevent accidental access and provide protection from electrostatic discharge.
- When handling sensitive devices, use an antistatic bracelet or equivalent earthed protective device against electrostatic discharge.
- Before handling the device, always discharge the static electricity from the body by touching an earthed surface or type-approved antistatic mat.

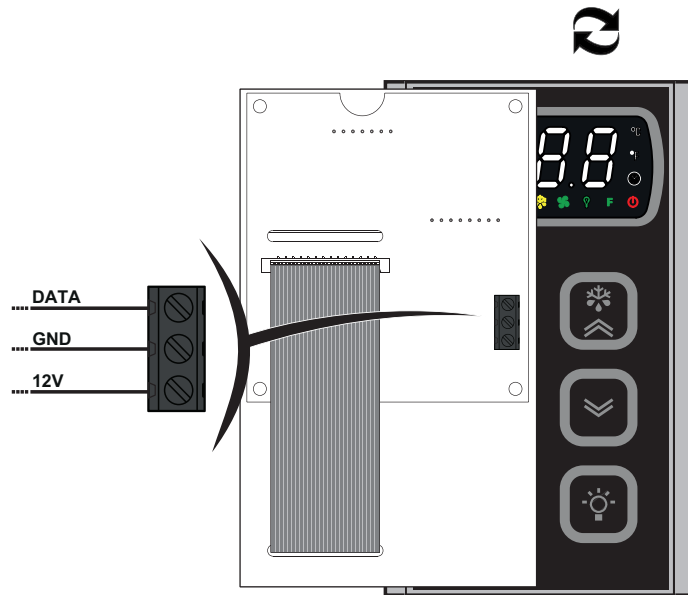
**Failure to follow these instructions can result in death, serious injury, or equipment damage.**

**NOTICE**

**UNINTENDED EQUIPMENT OPERATION**

- Do not expose the equipment to liquids.
- Do not exceed the temperature and humidity ranges specified in the technical data.

**Failure to follow these instructions can result in equipment damage.**



The table below shows the type and size of cables for screw terminals with spacing of 5.00 mm (0.2 in.).

									Ø 3.5 mm (0.14 in.)		N•m 0.5...0.6 lb-in 4.42...5.31
	mm <sup>2</sup>	0.2...2.5	0.2...2.5	0.25...2.5	0.25...2.5	2 x 0.2...0.75	2 x 0.2...0.75	2 x 0.25...0.75			
AWG	24...14	24...14	24...14	24...14	2 x 24...18	2 x 24...18	2 x 24...18	2 x 20...16			

**NOTICE**

**UNINTENDED EQUIPMENT OPERATION**

Tighten the connections in compliance with the technical specifications for torque values.

**Failure to follow these instructions can result in equipment damage.**

## LIABILITY AND RESIDUAL RISKS

---

The liability of Schneider Electric and Eliwell is limited to the correct and professional use of the product according to the directives referred to herein and in the other supporting documents, and does not cover any damage (including but not limited to) the following causes:

- installation/use other than what is intended and, in particular, in deviation from the safety regulations set forth by the standards and/or included in this document;
- use on panels that do not guarantee suitable protection against electrical shock, water and dust in the assembly conditions;
- use on panels which allow access to dangerous parts without the aid of a keyed or tooled locking mechanism;
- product tampering and/or alteration;
- installation/use on panels that do not comply with the regulations in force in the country of installation.

## LIABILITY DISCLAIMER

---

This publication is the exclusive property of Eliwell, which absolutely prohibits its reproduction and distribution of unless expressly authorized directly by Eliwell itself. This document has been prepared with utmost care; however Eliwell cannot accept any liability in relation to its use.

The same applies to people or companies involved in the creation and preparation of this manual. Eliwell reserves the right to make any design-related or functional changes to this document without notice and at any moment.

## CONDITIONS OF USE

---

### Permitted use

The device must be installed and used in accordance with the provided instructions and in particular, in normal conditions, dangerous energized parts must not be accessible. It must be suitably protected against water and dust based on the application and must also be accessible only with the use of a keyed or tooled locking mechanism. The device is suited for being integrated in equipment for domestic and commercial use and/or similar for refrigeration purposes and has been checked on the basis of the harmonized European standards of reference.

### Prohibited use

Any use other than what is permitted is in fact prohibited.

## DISPOSAL

---



The equipment (or product) must be collected separately in compliance with current regulations on disposal.

### Eliwell Controls s.r.l.

Via dell'Industria, 15 • Z.I. Paludi  
32016 Alpago (BL) - ITALY  
T: +39 0437 986 111  
F: +39 0437 989 066

[www.eliwell.com](http://www.eliwell.com)

### Customer Technical Support:

T: +39 0437 986 300  
E: [techsuppeliwell@schneider-electric.com](mailto:techsuppeliwell@schneider-electric.com)

### Sales:

T: +39 0437 986 100 (Italy)  
T: +39 0437 986 200 (other countries)  
E: [saleseliwell@schneider-electric.com](mailto:saleseliwell@schneider-electric.com)

code 9IS24686-1.01 • KDT Split • rel.12/18 • EN  
© 2018 Eliwell • All rights reserved.