

- (1): Common contact
- (1)-(3): Open on pressure rise
- (1)-(5): Open on pressure drop

see next page for available connection variants and accessories

### Specifications

- Type: Auto reset
- Differential: Adjustable
- Configuration: Single
- Contact configuration: SPDT
- Rated current: 1-3 (or 1-5): 16(16)A 240Vac  
1-5 (or 1-3): 1(1)A 240Vac
- Degree of protection: IP44 with top cover  
IP20 without top cover
- Method of mounting control: Independently mounted
- Ambient working temperature: -40T65 °C
- Intended transportation conditions: -40T65 °C, 10-90%RH (non condensing situation)
- Max refrigerant temperature: 120°C

### FACTORY SETTING

Model	PRESSURE RANGE [bar/g] / [psi/g]	DIFF. RANGE [bar/g] / [psi/g]	CUT OUT [bar/g] / [psi/g]	CUT IN [bar/g] / [psi/g]	DIFF. [bar/g] / [psi/g]	Use terminals	Max.PS [bar/g] / [psi/g]	Burst Pressure [bar/g] / [psi/g]
D16P45A01MS200	10...45 / 145...653	5...15 / 73...218	42±1 / 609±14	37±0.9 / 537±13	5±0.4 / 73±6	1-5	50 / 725	200 / 2900

Eliwell Controls srl IT 32016 Alpage	<b>D16P45A01MS200</b> D16P high press control auto reset 45bar D16P Пере высокого давления автоматический сброс 45бар		RN- YNMMDD-SSSSS Made In China		TA:-40T65 °C PS:50 bar Range:10...45 barg Diff:5...15 bar	1-3(or 1-5): 16(16)A 240Vac 1-5(or 1-3): 1(1)A 240Vac
					Product traceability, date and serial number	

D16P high press control auto reset 45bar

D16P Пере высокого давления автоматический сброс 45бар

Product traceability, date and serial number

### Revision History

Cur Prev	Note	Signature	Date

Adjustable  
HIGH  
PRESSURE  
CONTROLS

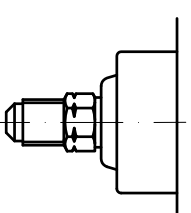
D16P45A01MS200

Weight	Ratio
	1:1(A3)
Page1	Total

### Product code structure

- Type
- D**
- Case size
- 16** Case 80mm
- Product type
- P** Pressure Switch
- Pressure range (xx)
- 45** 10...45 barg
- Reset type
- A0** Automatic(single switch)
- Product configuration
- 1** Standard version
- Pressure connection (y)
- M** 7/16-20UNF
- Pin contact configuration
- S** Standard AgNi
- Kit and packaging
- 2** topcover + knob + instruction sheet
- Customization
- 00** standard model

### Available pressure connections



(M)

Revision History			
Curr	Prev	Note	Signature Date

Designer	Date	<h2 style="margin: 0;">Adjustable HIGH PRESSURE CONTROLS</h2>	
Checked			
Verified			
Approved			

D16P45A01MS200					
	Weight	Ratio			
			Page2	Total	
				1:1(A3)	

by Schneider Electric